

# MARDLES

August – October 2017

## The Folk Magazine for East Anglia

Suffolk, Norfolk, Cambridgeshire and Essex News, Reviews and Listings



*Slovenian band Terrafolk, who appear at Folk East this year*

In this issue:

The Future of Suffolk Folk and Mardles

Local and new Morris Teams at St Neots Folk Festival

Taking English Folk Dance all over the World

Traditional Song Research in Cambridgeshire

Published Quarterly by Suffolk Folk

~ Free to Members ~



[www.suffolkfolk.co.uk](http://www.suffolkfolk.co.uk)

**£1.50**



# EVERYMAN FOLK CLUB

Registered Charity Number: 267165

## 29 September 2017 **THE TEACUPS**

A beautiful sound – Alex Cumming, Kate Locksley, Rosie Calvert and Will Finn are a vibrant a cappella quartet, singing arrangements of traditional and contemporary songs in a wide variety of styles. This talented foursome met in 2010 whilst studying on the BMus Folk & Traditional Music Degree at Newcastle University, and they have since appeared at top festivals and venues in the UK and Europe.



## 27 October 2017 **KEN WILSON & JIM McFARLAND**

Following The Wilson Family being guests at the club in 2016, we are delighted that Ken – a fabulous singer in his own right – is returning with Jim McFarland. From Derry, Jim has a characteristic and gentle voice, and is one of Ireland's finest traditional singers. Ken and Jim perform English and Irish traditional songs, enhanced by their mutual respect for each other's singing and repertoire.



## 24 November 2017 **MAKEPEACE: DEMPSEY, ROBSON, HUTCHINSON**

We're thrilled to bring you a wonderful trio of familiar faces in a new collaboration. Kevin Dempsey is an excellent guitarist, Carolyn Robson is an acclaimed singer, and Paul Hutchinson is a top accordionist. Together, they will take us on an incredible musical journey, interpreting songs and tunes from Playford to the Stones, and from the far corners of the earth, in a way you have never heard before!



**Always the last Friday of the month at 8.00pm (doors open 7.30pm)**

*A booked guest, floor singers, and a warm welcome on every occasion.*

**The Riverside Centre  
Gt Glemham Road  
Stratford St Andrew  
Saxmundham, Suffolk IP17 1LL**

*Tickets are only £5 bought in advance, otherwise £6 on the door.*

**01449 615523**

**[www.everymanfolkclub.co.uk](http://www.everymanfolkclub.co.uk)**



# Contents

|  |           |
|--|-----------|
| <b>Advertising in Mardles, List of Advertisers.....</b>                | <b>4</b>  |
| <b>Contact Details for Mardles and the Suffolk Folk Committee.....</b> | <b>5</b>  |
| <b>Stirrings — Editorial, Letters and Opinions.....</b>                | <b>6</b>  |
| <b>News and Information about Suffolk Folk.....</b>                    | <b>8</b>  |
| Minutes of the Suffolk Folk AGM.....                                   | 8         |
| The New Mardles Web Site.....  | 9         |
| Report from the Snug — Jill Parson.....                                | 10        |
| <b>Newsreel .....</b>  | <b>12</b> |
| Folk East Launch.....  | 12        |
| VWML Refurbishment.....  | 12        |
| Percy Webb Memorial Trophy Singing Competition.....                    | 13        |
| <b>Morris on! — Dave Evans and Gill Brett.....</b>                     | <b>14</b> |
| Kit Refresh?.....  | 14        |
| St George’s Day in Hundon.....   | 16        |
| St Neots Folk Festival.....  | 17        |
| Morris Shorts.....   | 18        |
| Morris Later Summer Tours.....   | 21        |
| Morris Clubs.....  | 22        |
| <b>Up A Double and Back : Social Dance — Helen Barrett.....</b>        | <b>26</b> |
| <b>News from...Norfolk.....</b>  | <b>28</b> |
| <b>The Search for a Local Repertoire – Mary Humphreys.....</b>         | <b>30</b> |
| Song: Abroad as I was Walking.....                                     | 32        |
| <b>CD Reviews .....</b>  | <b>34</b> |
| Bounty Hounds – Boxed In.....  | 34        |
| Sedbuskers – The Lady in the Lake.....                                 | 34        |
| Moirai – Here and Now.....   | 35        |
| Two Coats Colder – Moment in Time.....                                 | 36        |
| Jim Causley and Friends – I am the Song.....                           | 38        |
| <b>Artists      Bands, Callers, Singers and Musicians.....</b>         | <b>40</b> |
| <b>Club and Session Guide.....</b>                                     | <b>42</b> |
| Suffolk.....   | 42        |
| Norfolk .....  | 46        |
| Essex.....   | 48        |
| Cambridgeshire.....  | 50        |
| Events Diary — What, Where, When.....                                  | 52        |
| Event and Venue Contact Details.....                                   | 56        |
| <b>Media      Radio, Internet, Publications.....</b>                   | <b>58</b> |

---

*Cover picture: Slovenian band Terrafolk, who appear at Folk East this year*

## Advertisers In Alphabetical Order

|                                       |    |
|---------------------------------------|----|
| Big Music Night (SF)                  | 7  |
| Blaxhall Ship Inn                     | 39 |
| Bury Folk Collective                  | 29 |
| Ceilidhs on the Move                  | 59 |
| Colchester Folk Club                  | 17 |
| Come and Join the Band (SF)           | 10 |
| EATMT Traditional Music Day           | 33 |
| East Anglian Scandi Group             | 19 |
| Everyman Folk Club                    | 2  |
| Hadleigh Folk and Acoustic Nights     | 17 |
| Happy Sam Folk Events                 | 37 |
| Harwich International Shanty Festival | 19 |
| Hobgoblin                             | 60 |
| J S Arts                              | 45 |
| Martyn White melodeons                | 11 |
| Milkmaid Folk Arts Centre             | 41 |
| Milkmaid Folk Club                    | 15 |
| Norfolk Ceilidhs                      | 49 |
| On Y Va!                              | 39 |
| Pete Coe new CD                       | 35 |
| St Neots Folk Club                    | 55 |
| P J Music                             | 57 |
| Stanton Musicians                     | 49 |
| Weybourne Folk Weekend                | 39 |

**Please remember to let our  
advertisers know that you saw  
them in Mardles!**

## ADVERTISING IN MARDLES

### Rates

|                                |     |
|--------------------------------|-----|
| Back cover (colour )           | £45 |
| Inside covers/centre (colour)  | £40 |
| Single inside full page:       | £30 |
| Single inside half page:       | £18 |
| Single inside quarter page:    | £10 |
| Small ads, 20 words max:       | £2  |
| (Free to Suffolk Folk Members) |     |

### Copy Date

**15 September** for Nov-Jan issue

### Advertising Copy

Advertising copy can be received electronically as a JPEG, PNG or PDF at a minimum of 300dpi, or as camera-ready hard copy. No Microsoft Publisher (.PUB) files please. PDF should contain embedded fonts. Advertisements are mostly greyscale. Contact us for availability of colour advert space.

We can set your advertisement for you from plain text, for an extra charge of £10.

### Sending your advert and enquiries

Email: [advertising@suffolkfolk.co.uk](mailto:advertising@suffolkfolk.co.uk)  
Phone Simon 01473 828745 (home)  
or 071818 417780 (mobile)

### Payment

#### Online:

[www.suffolkfolk.co.uk/adpayment.php](http://www.suffolkfolk.co.uk/adpayment.php)

#### By Post:

Please make cheques payable to **Suffolk Folk** and send (with details of what it's for) to:

Mardles Advertising  
4, Church Street  
Hadleigh,  
Suffolk  
IP7 5DU

# Contacting Mardles

## Copy Date for Next Issue

15th September 2017

## Letters and Articles for Publication

editor@suffolkfolk.co.uk

Anahata 01535 501017

Please use plain text and send pictures (if any) as separate JPEG files.

## Listings updates

Listings@suffolkfolk.co.uk

## Postal Address for Review Material (CDs, Books)

Val Haines, 4 Church Street  
Hadleigh IP7 5DU

## Morris News/Club Updates

Dave Evans and Gill Brett

Email: morris@suffolkfolk.co.uk

## Social Dance News

Helen Barrett

dance@suffolkfolk.co.uk

## Small Print

Whilst all reasonable care is taken to ensure content is honest and truthful, no liability can be accepted if you find otherwise. Information is believed to be correct at the time of printing, and no liability will be accepted for errors or omissions. We recommend you check dates and venue details with the venue or organisation.

Suffolk Folk welcomes contributions but accepts no responsibility for unsolicited material. Views expressed are solely those of the author, and do not necessarily reflect the views of the editor or the Suffolk Folk Association.

Unless otherwise noted, text and images are copyright of the author — all rights reserved. The contents may not be copied or reproduced in any manner without written permission of the editor.

# Suffolk Folk Committee

## Chair

Jill Parson

Flat C, 100 Earlham Road  
Norwich

NR2 3HB

01603 620273

info@suffolkfolk.co.uk

## Secretary

Val Haines

val@suffolkfolk.co.uk

## Treasurer

Mike Rudge

treasurer@suffolkfolk.co.uk

## Mike Lawrence, Sue Lawrence

Events diary

## Val Haines

Mardles distribution

## Simon Haines

Web site co-ordinator,  
advertising

## John Heaser

Web site technical adviser

## Peter Rushmer

Norfolk Folk Association

## Julie Gittoes

Folk in the community /  
education

## Other Contributors

### (not committee members)

Gill Brett & Dave Evans: Morris Matters

Anahata: editor, IT, web site

## Special Email Addresses

Mardles editor

editor@suffolkfolk.co.uk

Mardles advertising:

advertising@suffolkfolk.co.uk

Mardles distribution:

distribution@suffolkfolk.co.uk

Club and event listings

listings@suffolkfolk.co.uk

Website and email

webmaster@suffolkfolk.co.uk

Social and ceilidh dance

dance@suffolkfolk.co.uk

Morris On!

morris@suffolkfolk.co.uk

Anything else

info@suffolkfolk.co.uk

Web site: www.suffolkfolk.co.uk



## From The Editor

### Winding Down and Moving On

Simon Haines is “getting out less” and, as he mentioned in the last issue, the final instalment of his reminiscences of the folk scene over the past 50 years was also his last contribution to the magazine. Helen Barrett came up at the last minute with this issue’s “Up a Double and Back” feature, though she says this one will be the last. Many thanks to both for their substantial contributions.

We’re far from out of material, though, with David Evans and Gill Brett’s usual “Morris On” section, a song from Mary Humphreys and the usual news and reviews.

I’m sure the news of most interest in this issue, however, will be the discussions at and before the Suffolk Folk AGM on June 13th.

For some reason we’ve never published the AGM minutes in Mardles – as it’s a public meeting there’s no reason why we shouldn’t – but with all this year’s upheavals a full report on the meeting and its implications will appear in the following pages.

### No More Membership Subscriptions... And Cancel Your Standing Order! (please)

In connection with that, there’s one point I must draw attention to right now. You will notice that this issue of Mardles has no pages about Suffolk Folk membership and no renewal form. Mike Rudge (membership secretary until the AGM) has reported that some people have already (or still) been trying to join or renew their membership. There will be no paid membership of Suffolk Folk in the foreseeable future. If, at some time in the past, you set up a standing order with your bank to renew your membership automatically each year, please cancel it now, or it will continue getting paid! Fortunately, Mike has

taken over the role of treasurer, so if any standing order payments come in, he might be able to trace them, but please don’t make his job harder than it has to be, and be warned that banks can be amazingly opaque about where a payment has come from.

### Local Morris Teams at Folk East

In the last issue of Mardles, it was claimed that Folk East was not inviting local morris teams to the festival this year. We have heard from the Folk East organisers that this is quite untrue. There seems to have been a misunderstanding based on the decision to exclude some local teams who had appeared at the festival for three years running previously. Many other local morris and other dance teams from East Anglia have, in fact, been invited and will be appearing at the festival this year.

Of course it’s not practical for me as editor to check all the details of any material that is sent in, and the small print on page 5 makes it clear that we accept no liability for errors or omissions; nevertheless we do try to get things right (the small print says that too). Nor have I any wish to give Folk East a bad reputation, so I am happy to publish this correction, and an apology was also posted to the Suffolk Folk web site earlier this year. It’s especially ironic as the festival, despite having a nationwide appeal and reputation, has always made a feature of local talent and produce in all aspects of its activities.

### Summer Holidays!

Despite a current setback in the sale of our house, Mary H. and I expect to be mostly resident in Yorkshire this summer, though we’ll be around for Folk East and one or two other events. Wherever you’re going, enjoy the festival season!

*Anahata ~ June 2017*

# Big Music Night 33

Saturday October 7th 2017

At

**Henley Community Centre**

**Henley, Ipswich, Suffolk IP6 0RP**

(approx 4 miles north of Ipswich)

Licensed Bar & plenty of parking space.

From 7.30pm (doors open 7.00pm)

£5 on the door (£4 Suffolk Folk Members)

Colin & Karen Cater - Stephen Bayfield

Colombines - The Peter Kerr Band

Green, Tricker & Ward

And more TBC

Folk & other acoustic music, Instrumentals and more, usually  
comprising

nine acts, leading to a finale.

Proceeds after expenses are donated to local charities including  
St Elizabeth Hospice & East Anglia's Children's Hospices

Further details for any of the above: Mike & Linda Green 01473-213740

[greens15@virginmedia.com](mailto:greens15@virginmedia.com)



## Minutes of the Suffolk Folk AGM 13th June, 2017 8pm at The Ark, Needham Market

### 1. Present:

Mary Humphreys, Mike Lawrence, Anahata, Jill Parson, Sue Lawrence, Stan Bloor, Maggie Moore, Mike Rudge, Val Haines, Simon Haines, Julie Gittoes, Gill Brett, Dave Evans, Mary Dickinson, Lindsay Want-Beal, Andrew Paige.

### 2. Apologies :

None recorded.

### 3. Minutes of the 2016 AGM :

Agreed. Proposed by Stan Bloor. Seconded by Mike Lawrence.

### 4. Reports of current officers:

Chair: Jill Parson; Secretary: Maggie Moore; Treasurer: Mary Humphreys  
(Accounts were proposed correct by Anahata, and seconded by Stan Bloor).

### 5. Election of officers & committee to serve 2017-2018:

| Post      | Proposed    | Proposer       | Seconder   |
|-----------|-------------|----------------|------------|
| Chair     | Jill Parson | Maggie More    | Mary H     |
| Secretary | Val Haines  | Jill Parson    | Stan Bloor |
| Treasurer | Mike Rudge  | Mary Humphreys | Val Haines |

### 6. Future of Suffolk Folk

The Chair outlined future plans for Suffolk Folk as follows:

From January 2018 there will be a web-based, advert carrying umbrella organisation called 'Mardles', ([www.mardles.org](http://www.mardles.org)), which will encompass the four counties of East Anglia. Suffolk Folk will use the remainder of 2017 as a transition from paper to web with the help of John Heaser and Anahata. There followed a discussion among the committee and members present where certain points were raised. It was decided that the Facebook page would continue.

Advertising would be available on the new website for a fraction of the existing cost; how this is done is still to be discussed. It is expected that much of the content of Mardles will be transferred to the new web site with a committee member having responsibility for each section. Therefore the current listings, morris matters, editorial, CD reviews, articles will still be available online, in addition to an up to date events calendar which will help to prevent date clashes. A monthly update email is being considered to alert subscribers to events and to encourage web site use.

### 7. Election of Committee Members and Assignment of Responsibilities

|              |  |
|--------------|--|
| Anahata      | will continue editing the two final editions of Mardles and oversee the existing site as it transitions. |
| Val Haines   | will continue as Mardles Distribution for the remainder of 2017.   |
| Simon Haines | Website co-ordinator/advertising   |



John Heaser  
Sue Lawrence  
Peter Rushmer  
Julie Gittoes  
Gill Brett and Dave Evans  
Val Haines

Website technical advisor  
Listings and diary  
Norfolk Folk Association representative.  
Folk in the Community/Education contact:  
Morris Correspondents  
will receive and distribute CDs for review.

**8. Next Committee Meeting:** Tuesday 18th July, venue tbc.

The meeting closed at 9.30 when thanks were given to the retiring Committee Members Mary, Anahata, Maggie and Stan, who were presented with Suffolk Folk Lifetime Membership Certificates and gifts of beer and wine.

*Val Haines ~ June 2017*

---

## The New Mardles Web Site

As the current Suffolk Folk webmaster, I thought I'd offer a few thoughts about setting up a web based folk organisation.

I wasn't present at the meeting between John Heaser, Peter Rushmer and the other continuing committee members, but I did have a long followup phone conversation with John Heaser afterwards.

There are a couple of listings sites in the area with folk music related content. One of them has a few problems and the owner is very inaccessible; the other is intended to be a free community swap shop, but apparently some local ceilidh bands have been advertising their gigs on it – enterprising but not ideal.

We have frequently considered putting the listings on a database behind the Suffolk Folk web site. The Mardles listings would have been a snapshot of this at the time of publication. However we didn't want to publish the listings on the site, because we thought (rightly or wrongly) that it would detract from the sales of Mardles. It would have had the advantage of being up to date and able to show events planned at too short notice to make it into the print magazine. The success of the "Stop Press!" page on the web site illustrates the need for this.

As another example of the usefulness of a web site with listings, I've frequently encountered requests on internet forums from folkies who are visiting the area and want to know where they can find a session, club or folk concert. In recent years I have been able to direct them to a place where they can download the current Mardles for £1, and that has worked well. It's been similar for local people looking for a ceilidh band. Having everything immediately viewable on the web would make that process even easier.

Numerous reports have been published recently showing that a large percentage of the population (especially the younger half) gets its news via their phones from the internet. Newspaper sales are dropping, and most newspapers have their content duplicated on a web site. So it's inevitable that this would happen, and I suppose I could say I've seen it coming since I created a web site for Angel Morris in the mid '90s when it was almost unheard of for a morris team to have a web site. Talking of phones, the new Mardles site will be built using a content management system that is capable of formatting pages so they will display sensibly on a small screen, something which

can't be said about the current Suffolk Folk web site. That's going to be essential or the site will be ignored by future potential users.

## Email and The Membership List

The new site will allow anyone to subscribe (no charge!) to receive emails notifying of updates to the site – perhaps once a month with a “contents page”-like format with links to new content on the web site. It is expected that the Suffolk Folk membership database will be retained for a while, and those with email addresses will be invited to join the email list. Of course every email will have an “unsubscribe” link so you won't be forced to receive unwanted emails if you don't want to continue with this.

## Run Your Own Listings

If you run a folk club, concert venue or session, we hope to enable you to edit your own entry to add things like dates, and of course your listing entry can have a link to your own web site if you have one.

## The Importance of a Name

We intend the site to cover all of East Anglia, like the magazine did. We'll be actively inviting contributions and updates from Norfolk, Cambridgeshire and Essex, and by dropping “Suffolk Folk” name, we hope to remove the perception that it's all only about Suffolk. Hence the domain name mardles.org, and for good measure we also have mardles.org.uk, mardles.co.uk and mardles.uk.

I'm not directly involved, so take all the above with a slight pinch of salt. Also when you read this, there may not be much there yet, but there's several months to go, and of course there's still the November issue of the printed magazine to come. See you later!

*Anahata ~ June 2017*

## COME AND JOIN THE BAND



## A Suffolk Folk Workshop to bridge the gap between playing at home and in public sessions.

**Learn easy traditional tunes**  
**Play at a reasonable pace**  
**Learn to play as a band**  
**Play harmonies & arrangements**  
**Gain confidence playing socially**

Designed for Beginners and  
Improvers on acoustic  
instruments in the keys of D & G.

**At The Ark,**  
**Needham Market**

**Every Second Thursday**  
**from 7.30pm to 9.00pm**

~ Admission £2.00 ~  
~ Suffolk Folk Members £1.50 ~

**For more details call**  
**01473 832565 or, even better,**  
**just turn up!**

## From The Snug

After some uncertainty, the great news is that the good ship 'Suffolk Folk' is set to sail on – albeit on a rather different course.

I am glad to be able to report that several people turned up for the AGM on 13th June and that we all left the building in a pretty buoyant and optimistic mood.

It is sad to be saying goodbye to the Mardles editor, the treasurer, events organiser and secretary, but all these positions have been filled by existing members of the committee and we have one new name to welcome in – Julie Gittoes who has kindly offered her services as 'Folk in the community' representative. Julie now becomes the person to contact with any enquiries relating to the education programme that SF offers to schools and any other organisations who are seeking to get a folk-related activity or project set up.

For all their hard work – which is very much appreciated – the departing officers were awarded something I believe they never thought they could achieve – lifetime membership of Suffolk Folk and a certificate to prove it!

We would of course be delighted to hear from anyone who may feel inspired to join us on this adventure. Contact [info@suffolkfolk.co.uk](mailto:info@suffolkfolk.co.uk) with any queries. We will be publishing and posting one more edition of Mardles after this one in the current format and will make full use of that to keep you fully updated on the coming changes as we approach the end of the year.

This is turning out to be a glorious summer and I hope you really enjoy all the wonderful local events and festivals that you plan to attend in the next couple of months.

*Jill Parson ~ June 2017*



**MARTYN WHITE  
MELODEONS**

### Melodeon Tuning and Repairs

Anything from a small repair to a full restoration



- ◆ Tuning and reed overhauls
- ◆ Re-waxing and re-valving
- ◆ Pallet re-facing
- ◆ Keyboard stops fitted
- ◆ Bellows gaskets
- ◆ Replacement grille cloths
- ◆ Replacing broken reeds
- ◆ Bass button bushing (Hohners)
- ◆ Major to minor chord changes
- ◆ Woodwork repairs
- ◆ Action set ups

**OLD HOHNER MELODEONS PURCHASED – DEAD OR ALIVE**

For advice or a quote call Martyn on **01245 473720 / 07885 265925**

**[www.melodeonrepairs.co.uk](http://www.melodeonrepairs.co.uk)** Email: [martyn@melodeonrepairs.co.uk](mailto:martyn@melodeonrepairs.co.uk)

## FolkEast Festival 2017 Launch

Folk East launched their 2017 Festival on 17th May at the Long Shop Museum in Leiston. Proceedings began with the majestic sight of a steam-powered roller pressing ink onto a woodcut template (designed by Norfolk's Print to the People) to produce the festival's 2017 poster. The back of the museum was transformed into a concert space with laid-back performances by Alden, Patterson and Dashwood, The Broadside boys, the Young 'Uns and Will Pound and Eddie Jay, all to be seen at the festival which runs from 18th to 20th August at Glemham Hall. The outside area was used to house a variety of street food and drink stalls, the whole area milling with enthusiastic people. Organisers John and Becky Marshall-Potter continue to produce a festival championing local music and produce while also bringing the finest performers to the East.

All the excitement is captured here <http://tinyurl.com/felaunch17>

Also see [www.folkeast.co.uk](http://www.folkeast.co.uk)

Val Haines ~ May 2017

## National Folk Arts Library to Undergo a Major Refurbishment

England's national library of folk music and dance is to undergo a major refurbishment this summer to ensure it is fit for future generations to explore and discover the folk arts.

The Vaughan Williams Memorial Library (VWML), the library of the English Folk Dance and Song Society at Cecil Sharp House in London, will be closed from July 19th to September 5th while work is carried out.

The VWML is the country's biggest dedicated library and archive of folk music, dance, and other traditions, and received Designat-



*Bookcases at the Vaughan Williams Memorial Library will be renovated as part of the major refurbishment.*

ed status from the Museums, Libraries and Archives Council (MLA) in 2011.

It opened as part of Cecil Sharp House in Regent's Park Road in 1930 to make Cecil Sharp's personal book collection accessible to the public.

The library still features the original bookcases made by Heal's on Tottenham Court Road and its Art Deco ceiling.

The seven-week programme will include the renovation of the historic bookcases by accredited conservators Bainbridge Conservation, painting the ceiling, new flooring, curtains, and readers' lamps.

A new display case to exhibit items from the archive will also be installed, along with facilities for browsing the VWML's extensive catalogue and online resources. The National Folk Music Fund, set up by Ursula and Ralph Vaughan Williams to support the VWML, is funding the £50,000 cost of the refurbishment.

Laura Smyth, Director of the VWML, said: "The Vaughan Williams Memorial Library is the nation's most prized resource for folk traditions and has been very well used by musicians, researchers, writers, historians, and other visitors over the years.

"The reading room has not undergone any major refurbishment since 1940, and the his-

toric furniture has become chipped, tired, and cracked over the decades. This carefully planned refurbishment will ensure that the library can continue to serve our users and be a place of discovery for the folk arts for many years to come."

For more information, go to [www.vwml.org](http://www.vwml.org).

*Jo Cunningham, EFDSS ~ May 17*

## The Percy Webb Memorial Trophy Singing Competition

On Sunday 30 April 2017 more than sixty folk gathered at The Ship Inn at Blaxhall, Suffolk for the annual singing competition for the Percy Webb Memorial Trophy tankard.

After Percy Webb died it was decided to buy a pewter tankard and sing for it annually to remember him. The current tankard, kindly donated by Suffolk Folk in 2007, replaces the lost original – and the replacement trophy has been engraved with the names of all past winners.

As their name was drawn from the tankard at random, each of the sixteen entrants performed their chosen song:

Megan Wisdom: *The Gardener*

Jim Scott: *Carrying Nelson Home (O'Connor)*

Karen Cater: *The Week Before Easter*

Will Podd: *An English Curse (Turner)*

Tess Gardener: *Pretty Nancy of Yarmouth*

John Robinson: *Great Northern River (Miles)*

Jackie Osborne: *The Last Rose of Summer*

Charlie Haylock: *In the Merry Month of May*

Zoe Wadey: *Constant Lovers*

John James: *The King of Rome (Sudbury)*

Tracey Wisdom: *Green Grows the Laurel*

Graham Schofield: *Where Ravens Feed (Miles)*

Sheila Darling: *Roger, The Miller*

Aryn Clark: *A Man You Don't Meet Everyday*

Lexy Scott-Hornsby: *The Truth About Love (own)*

Colin Cater: *The Bold Princess Royal*

The singing was held in three parts, giving the opportunity of two intervals for everyone to refill their glasses and chat, and it was great to see friends old and new.

And The Winner is – Tess Gardener with her lively and charming rendition of *Pretty Nancy of Yarmouth* – well done!

We were honoured that Percy Webb's nephew, George Gooding, had travelled from Sudbury for the event with his daughters, and delighted that he agreed to present Tess with the Tankard.



*Tess Gardener – Winner 2017, receiving the trophy from Percy Webb's nephew George Gooding*

As always, there was no entry fee. Instead, a collection pot for the St Elizabeth Hospice was passed around during the evening. We wish to thank everyone for their donations. The total collected was £70.58.

The event was traditional entertainment of a very good standard. We are grateful to all the performers as well as the audience for supporting the competition; Suffolk Folk for its sponsorship of the Tankard; and of course Terry Davey (owner of The Blaxhall Ship) and all his staff for their hospitality this year. We look forward to next year's competition, which is to be held on Sunday 01 May 2018.

*Steve & Mary Dickinson ~ 01.05.17*



## **Morris On!**

The deadline for this edition is 15th June so when you read this it may seem that the dancing season is almost over, except for big festival events like Folk East. For us it has hardly started, especially as we were away for much of May. We have therefore been catching up on Morris news and events.

In this edition we have discovered 2 new sides; Gill saw Slack Ma Girdle at St Neots and I saw them on a pub night in Burwell. I've also seen a video of Treacle Miners and can tell you a little bit about them. They both have original new kit and I have learned a new Morris term: "Steam Punk Morris" – see picture (p.18). Kit is also the subject of our first article, prompted in part by discovering that Vogue (yes, Vogue the fashion magazine!) had included Morris in a feature on "Merrie England". We also report on St George's Day in Hundon and the St Neots Folk Festival Day of Dance and some quick updates in Morris Shorts.

We hope you are having a good summer of dancing and playing (and dressing up!).

*Dave Evans & Gill Brett ~ June 2017*

### **Does Your Kit Need Brightening up and a Refresh?**

Finding something to write in this column when I had been away for three weeks at the beginning of the Morris season has not been easy, and I was reminded that at this time of year former columnist Adam Garland used to challenge us to make sure that our kit was clean, our handkerchiefs ironed, and that our bells and shoes were shiny (at least for the start of the season!).

For some dancers this may not last long and I clearly remember one of our dancers

turning out for two weeks in a row wearing a shirt that had had at least one pint of beer poured over it; his shoes were none too shiny either, but pot and kettle come to mind so I'd better get to the point.

In my search for material I came across two unusual references to Morris kit: one in a most unexpected place and the other describing how Boss Morris from Stroud wear a different kit each time they dance out and they have the photos to prove it!

In July 2011 Vogue, the fashion magazine, decided it was time to engage with a different demographic and in a feature called "Merrie England" they portrayed the "unprecedented revival" of English folk. They commissioned photographer Tim Walker to capture images that reflected the blossoming of this revival.



*Whittlesea Straw Bear and Minder*

Some of his pictures are traditional fashion photos but with a folk edge and include a Vivienne Westwood cap featuring pheasant

feathers ("an integral part of the Morris tradition", apparently), and a corn-dolly inspired basque by Alexander McQueen (very prickly). The real Straw Bear from Whittlesea also featured along with the bear minder in a very fine and patriotic waistcoat. Also photographed in his winter Whittlesea kit is a "Red" Leicester man resplendent in his tatters.

The feature concludes with a picture of Hannah wearing a Louise Grey dress with headpiece which "channels the anarchic spirit of May Day".

If you'd like to see the feature and the rest of Tim Walker's photos you can find them at: <http://dustyburrito.blogspot.co.uk/2013/10/merrie-england-tim-walker-shoots.html#/2013/10/merrie-england-tim-walker-shoots.html>

If you've been inspired by the prospect of giving your kit a more fashionable edge and a bit more street cred, be warned it is possible to go to extremes and end up giving yourself more of a challenge than you may have bargained for.

Boss Morris of Stroud are a good example of this and allegedly they have "many followers in the fashion world". They were founded in August 2015 by Alex Merry who has also danced with Belles of London City, and if you have seen them perform you will know what to expect from their kit: something different. Or in the case of Boss Morris, several things different.

It's hard to describe their kit as, from the photos on their website, they really do have a different kit for each event. Not only a different kit but also a wide variety of face paint / disguise / make-up. It's not surprising to find that a number of their members, all apart from Alex Merry new to Morris, are involved in the visual arts.

They are a side who are clearly well connected and in their short existence have



# The Milkmaid

## AT THE CLUB:

**August**

Club closed for Summer break

## September

1<sup>st</sup> Other Roads

15<sup>th</sup> Daniel Nestlerode

## October

6<sup>th</sup> John Richards

20<sup>th</sup> Andrea King & Adrian Black

## AT THE APEX:

**October**

10<sup>th</sup> The Young Uns

**And don't forget**

**The Bury St Edmunds**

**OXJAM folk weekend**

**14<sup>th</sup> -15<sup>th</sup> October**

Winter Wilson, Sally Ironmonger,  
Rosie Eade Band,

Wendy Arrowsmith and many more

**[www.oxjamfolkburysteds.co.uk](http://www.oxjamfolkburysteds.co.uk)**

**The Milkmaid Folk Club meets at:**

**The Constitutional Club**

**12 Guildhall Street**

**Bury St Edmunds**

**IP33 1PR**

Doors open 7.30pm Concerts start 8.00pm

07980 840220

[milkmaidjohn@yahoo.co.uk](mailto:milkmaidjohn@yahoo.co.uk)

**[www.milkmaidmusic.co.uk](http://www.milkmaidmusic.co.uk)**

*For Apex Theatre events phone  
box office on 01284 758000*

appeared at some impressive events such as with Trembling Bells and Belle and Sebastian at the Royal Albert Hall, All Tomorrow's Parties Festival and for Punchdrunk Theatre. They have also appeared at an exhibition organised by the Museum of British Folklore ([www.museumofbritishfolklore.com](http://www.museumofbritishfolklore.com)). Their dances, which are mostly original creations, are based on Cotswold village traditions (especially Fieldtown) and as well as performing at high profile events they dance at local events in and around Stroud.



*Boss Morris during their Sisters of St. Roud phase (photo: Steve Rowley)*



*Boss Morris in more conventional kit (photo: Bob France)*

It's amazing what you can come across when searching for something to write about for Mardles.

*Dave Evans ~ June 2017*

## **St George's Day in Hundon**

The deadline for the last edition meant that we couldn't report on the St George's Day celebrations in Hundon. I know we've covered this event before and even had a piece about it from Vaughan of Belchamp Morris Men, who organises the whole thing, but I wanted to say that it was again a tremendous day with loads of sides, some who were there for the first time. These included Barley Brigg, who I think are the smiliest side in East Anglia. I love their kit, which is an imaginative and patriotic combination of red, white and blue and includes straw boaters for the women and tall flower-covered top hats for the men. They also dance with some impressive power and energy. I think they had a good time too, and not just because of the free beer tokens supplied by the generosity of the landlord.



*Barley Brigg, or Smiley Morris*

There were lots of sides there including Golden Star, Green Dragon, Westrefelda, Kenninghall, Bury Fair, Haughley Hoofers, Hageneth, a very entertaining Little Egypt and the hosts Belchamp who finished the day off with a "come-all-ye" Special Molly with hankies used to make the arches.

It's a great way to start the season, is well loved by the locals who attend in good

numbers and has the support and encouragement of a generous landlord. Who could ask for more? Next year will be its 10th anniversary so if you're interested, contact Vaughan Goldsborough at [vaughan1959@hotmail.com](mailto:vaughan1959@hotmail.com).

*Dave Evans ~ May 2017*

## St Neots 35th Folk Festival, June 2017

This is one of the region's smaller folk festivals, but very popular with dancers, organised as it is by the Heartsease Country Dancers and St Neots Folk Club. There is no accommodation included, but there are hotels and campsites in or near the town. St Neots is a thriving market town on the Great Ouse which is much beloved by swans. It has a long history, often hosting Civil War re-enactments, some attractive buildings and a popular picnic place in the Riverside Park.

To get everyone in the festival mood, the weekend opened on Friday night with a ceilidh called by Adam Hughes and music provided by The Hosepipe Band who are festival Friday night favourites.

Saturday was fine, sunny and hot – just what you want for a Day of Dance – well, maybe not the “hot” bit! Thirteen dance sides turned up to, as the French say, “animate” the town. They were mostly East Anglian sides, covering Cotswold Morris, North West Clog Morris, Rapper, Border and Molly dancing. In addition it was good to see Hertfordshire Holly (North West) from Hertford and Hemlock Morris (Border) from Bedford; also there were Redbornstoke Morris Men (Cotswold) from Ampthill who are in their 41st year. New to me were the few in number, but very energetic, Granta Blue Morris from Cambridge (Cotswold) and a new mixed Border side from Newmarket, Slack Ma Girdle (named after

## COLCHESTER FOLK CLUB

*Colchester Arts Centre  
Church Street*



**Sep 11 Pons Aelius**

**Sep 18 Greg Russell and Jack Rutter**

**Sep 25 Boo Hewerdine and  
Brooks Williams**

**Oct 2 Alden, Patterson and  
Dashwood**

**Oct 5 (Thu) Arts Centre Folk  
Special: Sharon Shannon**

**Oct 16 Sam Kelly and Jamie Francis**

**Oct 23 Martin Simpson**

**Oct 30 4 Square**

Mailing list: email [colchester.folk.club@gmail.com](mailto:colchester.folk.club@gmail.com)  
with SUBSCRIBE in the subject line.

**Box Office and Info 01206 500900**  
**[www.colchesterartscentre.com](http://www.colchesterartscentre.com)**

## Folk and Acoustic Music Nights

**The Ansell Centre, Market Place  
Hadleigh IP7 5DL**

**FRIDAYS at 8 O'CLOCK**

**Sep 1 Terence Blacker  
+The Columbines**

**Oct 6 Paul Scourfield  
+Phil Lyons**

**Nov 3 Two Coats Colder  
+The O'Driscolls**

**Dec 1 Alden, Patterson & Dashwood  
+Alan Day**

£5.00 (£2.00 under-16s)  
No bar, so bring your own drinks  
Floor spots available  
Contact 07818 417780  
Email: [info@hadleighfolk.org.uk](mailto:info@hadleighfolk.org.uk)  
Web: [www.hadleighfolk.org.uk](http://www.hadleighfolk.org.uk)



an almost extinct cider apple). As you might guess from their name their “steam-punk Victorian” kit includes basques – a type of tightly laced corset. (Though popular with a number of sides, I’ve always thought that they must be very tight and hot to wear, especially for dancing!)



*Slack ma Girdle  
(photo from team's web site)*

As the host side, Heartsease organised the dance programme, and in addition to the Farmers’ Market in the huge Market Square, they chose some good pubs and other spots for dancing. At the end of our last performance we were serenaded by one appreciative local who seemed to have worked his way through the pub’s extensive array of ciders. He probably wasn’t mentioned as an attraction when the festival was in the planning stage though!



*St Neots Folk Festival:  
Hoofers watch as Bows and Bells march on*

Heartsease had also been slaving over hot stoves during the week to produce tea and an impressive range of cakes at the Priory Centre for everyone to finish off the afternoon. Ah, the way to a clog dancer’s heart! – tea and cake!

The “animation” was ramped up on Saturday night by The Demon Barbers XL who brought their “Disco at the Tavern” to the Priory Centre – this exciting and lively show combines break dance and the various genres of English folk dance “with driven punchy tunes and songs, drum ‘n’ bass grooves, the odd touch of ska and an ever-present feel that this lot know how to party” (fRoots). They were supported by ex-“War Horse” performer Sophie Crawford.

The weekend finale was a concert featuring Northumbrian-based duo Landermason, supported by local performers Megan Wisdom and Chris Fox.

Keep an eye on [www.stneotsfolkclub.co.uk](http://www.stneotsfolkclub.co.uk) if you would like to try the festival next year.

*Gill Brett ~ June 2017*

## Morris Shorts Folk East

Despite the incorrect reporting in Mardles about Folk East not inviting local sides this year (*see p6*), Chelmsford Ladies, Danegeld, Green Dragon, Pretty Grim and Westrefelda will be there and the Pretty Grim offshoot, Treacle Miners, will make their first festival appearance. Several sides from further afield will also attend including Anstey Morris Men, Crooked Moon Appalachian and Oakenyouth Rapper (DERT youth winners 2016).

## Blacking-Up (again)

At the recent Joint Morris Organisations’ day of dance in Leicester, the JMO Committee prepared a document to use as a handout for sides using black face paint.



# Harwich International Shanty Festival 2017

13-15th October 2017



Concerts and workshops  
Free entertainment  
Maritime crafts  
Pub sessions  
Barge trips  
Pirates  
Shanties and sea songs  
throughout the town



[www.harwichshantyfestival.co.uk](http://www.harwichshantyfestival.co.uk)

@harwichshanty



[info@harwichshantyfestival.co.uk](mailto:info@harwichshantyfestival.co.uk)

Tel: 07921 640772



Harwich



International



Shanty



Festival



## East Anglian Scandi Group

Tel: Monica 01728 830085

Suffolk: [frenchdancer2006@yahoo.co.uk](mailto:frenchdancer2006@yahoo.co.uk)

Norfolk: [jinnylansbury@gmail.com](mailto:jinnylansbury@gmail.com)

or find us on face book – East Anglian Scandi Group

### Sounds of Scandinavia come to Suffolk

Friday 22<sup>nd</sup> September sees a Scandinavian Folk Concert coming to The Riverside Centre, Stratford St Andrew, Saxmundham, IP17 1LL.

The concert will take the audience through the captivating folklore of Sweden, blending traditional music and dance with modern freshness – all expertly performed by Jonny Dyer and Vicki Swann.

Doors open at 6.30pm and the concert will be from 7pm – 10pm. During the interval, you will be able to take the opportunity to dance some of the more popular dances – like the polska, hottishe and hambo. Tickets are £5 each.

We hope this concert will launch the East Anglian Scandi Group – this group is for those interested in learning the music and dances of Sweden and to offer regular events in East Anglian. If you are interested in being part of this group please contact us even if you cannot make the concert. Depending on the location of those interested we can then decide a venue and day/time for regular club nights to be held.

Following requests to make this more widely available, a PDF download version has now been prepared and is available for sides to use at: <http://tinyurl.com/ycuj2fpo>.

This document includes an endorsement of the JMO policy from the Secretary of State for Culture, Media and Sport which states:

I appreciate your concerns, and I would like to reassure you that we are fully supportive of this traditional dance. We are of course aware of a small number of complaints relating to the blacking of faces for certain dances, and, as the Secretary of State for Communities and Local Government, Sajid Javid, recently made clear, there are no racial connotations linked with this tradition.

### **"I Didn't Know Women Were Allowed to Do That!"**

The Morris Federation recently held an exhibition with the above title to celebrate their first 40 years. If you would like to borrow the photos, archive materials or promotional material to display at an event, contact Mike Everett at [archive@morrisfed.org.uk](mailto:archive@morrisfed.org.uk)

### **Treacle Miners Morris**

Thanks to Bill Johnston ([www.folkbluesnbeyond.co.uk](http://www.folkbluesnbeyond.co.uk)) for reporting that there is another new mixed border side in Suffolk. He describes them as a "splinter group" and they clearly have links with Pretty Grim both in terms of members and kit: bodice and swirly skirts for the women; the men are allowed to wear black and red tatter waistcoats and what looks like miner's helmets!

They now have a website (<http://treacleminersmorris.co.uk/>) and a Facebook page that confirms that they will be at FolkEast this year. Their first 'dance out' seems to have been at the Bildeston King's Head Beer Festival on 27th May. On their website there is a video of an informal performance outside the Sweffling White

Horse which is their home base. They actually practice at the Sweffling Pavilion, just off the Glemham road, on alternate Sundays (5pm until 7pm) and Mondays (8pm until 10pm). If you are interested in joining or seeing them you can contact them via their website.

### **Focus on Folk Dancing Through the Decades**

The Eastern Daily Press celebrated May Day with a series of archive photos of "some of the folk dancers that have performed around Norfolk", which can be found at <http://tinyurl.com/fdnorfolk>. Most of the sides are only identified as "Morris Dancers" (they get everywhere) but we have spotted Hoxon Hundred at New Buckenham's May Day fair on 6th May 1991; Kemp's Men dancing at Norwich Cathedral Close "with dancers from various parts of East Anglia" on 21st July 1979 and again in 1993 and Bury Fair at Diss Mere on 17th May 1980. There were many familiar faces too!

### **Dance in the City of Culture**

Four of Hull and East Yorkshire's dance teams – Beverley Garland, Green Ginger Garland, Makara Morris and Rackaback Morris – are inviting Morris Federation members to the City of Culture on Saturday, September 23rd where the Morris Federation's 2017 AGM will be held. Booking forms should have been submitted by 15th June but it may be worth enquiring if you fancy a trip north at <http://www.morrisfed.org.uk/resources/agm/> or <http://hulldayofdance.com/>.

The next JMO day of dance is in Peterborough on 19th May 2018 and will be hosted by Crosskey Clog. Details will be available later in the year.

*Dave Evans & Gill Brett ~ June 2017*

# Morris Late Summer Tours 2017

## Morris Summer Tours 2017

These are details which have been submitted Mardles. There may be other sides performing in the area who have not contacted us. Contacts for morris and clog sides appear elsewhere in Mardles. If planning to see a performance please check with the contact or website beforehand as sometimes, for unavoidable reasons, performances are cancelled or re-arranged.

| GROUP(S) | DAY  | DATE      | VENUE/EVENT   | TOWN/VILLAGE          |
|----------|------|-----------|---|-----------------------|
| RM       | Tues | 1 Aug     | 19.30 The Artichoke   | Broome                |
| HM       | Wed  | 2 Aug     | 19.30 Market Place & Bull                                       | Woolpit               |
| CMM      | Fri  | 4 Aug     | 20.00 The Foresters Arms  | Colchester            |
| CMM      | Fri  | 11 Aug    | 20.00 The Ale House   | Colchester            |
| PD, HH   | Sat  | 12 Aug    | TBA, Benhall Flower Show  | Nr Saxmundham         |
| RM       | Tues | 15 Aug    | 19.30 The Horseshoes  | Billingford           |
| HM       | Wed  | 16 Aug    | 19.30 Fox & Hounds  | Thurston              |
| CMM      | Fri  | 18 Aug    | 20.00 The Black Buoy  | Wivenhoe              |
| RM       | Sun  | 20 Aug    | 13.30 & 15.00 Barrel Fair                                       | Westleton             |
| RM       | Tues | 22 Aug    | 19.30 The Huntsman & Hounds                                     | Spexhall              |
| CMM      | Fri  | 25 Aug    | 20.00 The Chequers  | Great Tey             |
| ESM      |      | 25-27 Aug | Saddleworth Rushcart Festival                                   | Saddleworth, Yorks.   |
| RM       | Tues | 29 Aug    | 19.30 The Queen's Head  | Earsham               |
| HM       | Wed  | 30 Aug    | White Horse & Bear  | Beyton                |
| CMM      | Fri  | 1 Sept    | 20.00 The Pointer   | Alresford             |
| RM, LE   | Sat  | 2 Sept    | 12.00 The Buck  | Rumburgh              |
| ESM      | Mon  | 4 Sept    | 19.00 The Sorrel Horse, IP6 OPG                                 | Barham                |
| HM, HH   | Wed  | 6 Sept    | 20.00 The Old Counting House, Haughley & The Maypole, Wetherden | Haughley & Wetherden  |
| CMM      | Sat  | 9 Sept    | Suffolk Tour (see website)                                      |                       |
| HH       | Sun  | 10 Sept   | TBC 12.00 – 13.30 Folk Day at the Half Moon                     | Walton, nr Felixstowe |
| ESM      | Mon  | 11 Sept   | 19.30 The Punch Bowl, IP14 2LQ                                  | Battisford            |

**Key**            **TBC** = to be confirmed            **TBA** = time to be arranged

CMM = Colchester Morris Men (Cotswold)

ESM = East Suffolk Morris Men (Cotswold)

HH = Haughley Hoofers (North West Clog)

HM = Hageneth Morris (Cotswold, Border)

LE = Little Egypt (Cotswold)

PD = Point Devis (North West Clog)

RM = Rumburgh Morris (Cotswold)

# **Morris Clubs** **Morris and Molly Teams in East Anglia**

PLEASE SEND IN ANY UPDATES to [morris@suffolkfolk.co.uk](mailto:morris@suffolkfolk.co.uk)

## **SUFFOLK CLUBS**

BARLEY BRIGG (Mixed Northwest). Wed 8pm, Yoxford Village Hall, Contact: Annie Clark; email; [annie.clark@talk21.com](mailto:annie.clark@talk21.com); [www.barleybrigg.org.uk](http://www.barleybrigg.org.uk)

BURY FAIR WOMEN'S MORRIS - Wednesdays 8pm. Trinity Methodist Church, Brentgovel Street, Bury St Edmunds. Bagman: Linda Moden 01284 702967 Email: [buryfair@gmail.com](mailto:buryfair@gmail.com); Web: [www.buryfair.co.uk](http://www.buryfair.co.uk)

DANEGELD MORRIS (Mixed Northwest). Tues 8.15pm, Bredfield Village Hall, Nr. Woodbridge. Val Sherwen 01394 384067 [val\\_sherwen@hotmail.com](mailto:val_sherwen@hotmail.com)

EAST SUFFOLK MORRIS MEN. Mondays 8pm, Gosbeck Village Hall. Contact; Clive Cook; [esmm@btinternet.com](mailto:esmm@btinternet.com); [www.eastsuffolkmorris.org.uk](http://www.eastsuffolkmorris.org.uk)

GREEN DRAGON MORRIS mixed border side, meet at Fornham-all-Saints Community Centre IP28-6JZ; every Monday 8-10pm until April 2014 . contact: Andy at - [gdbagman@gmail.com](mailto:gdbagman@gmail.com); 22 Orchard way, Thetford, IP24-2JF.

HAGENETH MORRIS MEN. (Cotswold Morris) Practice at 8pm in Haughley Village Hall IP14 3NX on first, third and fifth Wednesdays from October – end April. Contact; [bagman@hageneth.org.uk](mailto:bagman@hageneth.org.uk) or Mike Bexon 01449 615816

HAUGHLEY HOOVERS (Ladies Northwest Clog) Practice at 7.30pm every Sunday in Haughley Village Hall, Haughley from September - end April. Contact 01449 676083, email [pjosephs.150@btinternet.com](mailto:pjosephs.150@btinternet.com); [www.haughleyhoovers.org.uk](http://www.haughleyhoovers.org.uk); [www.facebook.com/Haughley-Hoovers](http://www.facebook.com/Haughley-Hoovers);

HOXON HUNDRED (Cotswold, Northwest, Garland, Clog) Weekly practice Wednesdays 7.30-9.30pm (9.30-10pm social country dancing) from September, St Edmunds Village Hall, Hoxne. Tel Chris 01379 678169 or email [janbud@live.co.uk](mailto:janbud@live.co.uk)

LAGABAG MORRIS (Mixed Cotswold). Continuing in a "reduced way" contact Charles Croydon 01473 214116. [bagman@lagabagmorris.org.uk](mailto:bagman@lagabagmorris.org.uk); [www.lagabagmorris.org.uk](http://www.lagabagmorris.org.uk)

LITTLE EGYPT MORRIS MEN. Tuesdays 8pm. Glemsford Church Hall. Bagman; Mike Sewell, [mike\\_sewell53@yahoo.co.uk](mailto:mike_sewell53@yahoo.co.uk)

OLD GLORY MOLLY DANCERS. Sundays 10am. Not during spring or summer. The Rumburgh Hut, Nr Halesworth. Graham Elliott 01502 714661, 07733 348811, [management@old-glory.org.uk](mailto:management@old-glory.org.uk); [www.old-glory.org.uk](http://www.old-glory.org.uk)

OX BLOOD MOLLY (Mixed Molly and Mumming) Practices: Peasenhall Assembly Hall most Sundays autumn/winter 2- 4pm. Please ring first as we may be dancing out. Contact Zoe-Anne Wadey 07767763318; e-mail [oxbloodmolly@gmail.com](mailto:oxbloodmolly@gmail.com)

POINT DEVIS (Mixed NW & Garland). Thursdays 8-10pm, at The Gannon Rooms, Saxmundham,. Lin Barnes [frenchdancer2004@yahoo.co.uk](mailto:frenchdancer2004@yahoo.co.uk)

PRETTY GRIM (Mixed Border) Thursdays 8pm, Blaxhall Village Hall, Contact 01728 272 1254, [www.prettygrim.weebly.com](http://www.prettygrim.weebly.com)

RUMBURGH MORRIS Mixed Cotswold & Mumming; Practice Night Tuesdays 7.45pm at St Margaret South Elmham Village Hall IP20 0PN starting 7:45pm and afterwards at the Rumburgh Buck contact Rita Jackson 01986 897082  
bagpeople@rumburghmorris.org.uk; www.rumburghmorris.org.uk

SLACK MA GIRDLE Mixed Border (Steam Punk Morris?), Practice on Tuesdays 8 – 10pm at Exning Working Men's Club 54, Exning Rd, Newmarket. Contact Rob 07966 241773; www.slackmagirdle.com ;email- slackmagirdle@gmail.com

TREACLE MINERS Morris Mixed Border; Practice Night Mondays (8 -10pm) and alternate Sundays (5 – 7pm) at Sweffling Pavilion. Contact via website;  
http://treacleminersmorris.co.uk/

WESTREFELDA (Mixed Cotswold). Mon 8pm. Westerfield Parish Hall, Church Lane, Westerfield. Ipswich. Liz Whatling 01473 281141. squire@westrefelda.co.uk or Jenny Everett; bag@westrefelda.co.uk www.westrefelda.co.uk

## **NORFOLK CLUBS**

EBEKNEEZER (Appalachian Step). Sat am, venue variable in Norwich. John Dimascio 01263 734640 or jsdimascio@aol.com

FIDDLESTICKS (Women's Northwest Clog). Mondays 7.30pm, High School, Newmarket Road, Norwich. Janet Selvey 01953 882453 or inquiries@fiddlesticksclog.org.uk  
www.members.aol.com/fiddlesticksclog

GOLDEN STAR MORRIS (Mixed Cotswold). Sundays 7.30pm. St. Catherine's Church Hall, Aylsham Road, Norwich. Eamonn Andrews 01379 384207  
goldenstarmorris@hotmail.co.uk www.goldenstarmorris.org.uk

HOLT RIDGE MORRIS (Mixed Cotswold) Monday evening practice at Blickling Hall except in the height of summer. Squire and main contact: Brian Antuar (Open Morris Secretary) 01263 715762 or Roddy McKenzie 01508 470851

KEMPS MEN Wednesdays 7:30pm. St Marks Church Hall, Hall Road, Norwich. Richard Woodham 01603 736411 kempsmen@hotmail.co.uk

KENNINGHALL MORRIS (Mixed Border) Practices Thursdays 7.30 pm Hinderclay Village Hall. Contact Peter Osborne 01953 888291; email: bagman@kenninghallmorris.org.uk ; www.kenninghallmorris.org.uk

KINGS MORRIS (Mixed Cotswold); practices Monday evenings, 8.00pm Memorial Hall, Wiggenshall St. Germans. Dance outs: May – September, Friday evenings 8.00pm; David Jackson (Bagman) 9 Edward Street, King's Lynn PE30 5QS Tel 01553 768930; paljac7@yahoo.co.uk; www.thekingsmorris.co.uk/

OUSE WASHES (Molly). Mon 8pm, 2nd, 4th & 5th Mon, Village Hall, Wimbotsham; 1st & 3rd Mon, Parish Rooms, Swaffham. Nicky Stockman 01362 687156  
nicky.stockman@virgin.net www.ousewashes.org.uk

PEDANT'S REVOLT (Border). Wed eve, variable, in Norwich. John Dimascio 01263 734640 or jsdimascio@aol.com

WEAVERS MORRIS Wednesdays 7.45pm at St Nicholas Church Hall North Walsham Contact Colin on 01263 513589 or email colin@poppy-house.co.uk



## ESSEX CLUBS

ALIVE & KICKING (Women's Northwest / Clog). Wednesday 7.45pm. NHS Clinic, Maldon Community Centre, Wantz Close. Angela Clarke 01621 857569  
ovals@sky.com

ANNIE'S FANTASIES (Mixed Northwest) Sunday, Sheila Kelly 01206 798076  
Annies@theatrearts.biz

BELCHAMP MORRIS MEN (Men's Border and Cotswold) Ian Ward, telephone 07976011318, email: ian.ward@ellmers.co.uk

BOWS 'N' BELLES (Women's Northwest/Garland). Sundays 3pm. Aldham Village Hall. Sue Pratt 01206 240682 bowsnbellesclog@yahoo.co.uk

CHELMSFORD MORRIS: Men's Cotswold and Border Morris - Wednesdays 8pm, Writtle Christian Centre, Writtle. Also Women's Northwest and Step Clog - Thursdays 8.15pm, at Great Waltham Village Hall, South Street, Great Waltham CM3 1DF. Celia Kemp; bagman@chelmsfordmorris.co.uk; www.chelmsfordmorris.co.uk

COLCHESTER MORRIS MEN. Fridays 8pm. Mile End Methodist Church Hall, Mile End Road. Martin Theobald 01206 853500, bagman@colchestermorrismen.org, www.colchestermorrismen.org

COLCHESTER PLATYPUS APPALACHIAN. Wednesday 8pm. Wilson Marriage Community Centre, Barrack Street. Christine Fenn 01206 795215  
christine.fenn@barnardos.org.uk

CROUCH VALE CLOG MORRIS Wed. 8pm Cathy Carpenter 01245 353558  
cathy@chippies.eu

DARK HORSE MORRIS Thursdays, Maldon. Susan Watson darkhorsemorris@yahoo.co.uk

HANDS AROUND, Fridays in Thurrock; Border, Cotswold, Mumming; June Wells 01268 521645 junestorytent@btinternet.com

HAWKSWORD: Mixed Longsword and Rapper - Mondays 8pm, Leyton. Peter Kemp 01245 263753 peter.kemp@dsl.pipex.com

LEADING LIGHTS: Mixed Cotswold, St Joseph's Church Hall, Fronks Road Dovercourt, Mondays 8 p.m., Peter Davis 01255 240220 peter1987.pd@googlemail.com

MALDON GREENJACKETS: Mixed Cotswold, United Reform Church, Market Hill, Tuesdays 8 p.m., Jim Murphy 01268 747869 gj\_bag@maldonmorris.org

RISING LARKS (Women's Northwest/Garland/Step Clog). Friday 8pm (not first Friday) Beaumont Village Hall. Sue Curd 01255 507835. susiecurd@hotmail.co.uk

PRIORY MORRIS (Mixed Border Morris). Sunday 1pm. Kings Arms, St Osyth. Miriam Russell 01255 822481

SOKEN MOLLY (Mixed Molly). Walton-on-the-Naze. "near-enough disbanded", contact Malcolm Batty 01255 851399; s.battybatty@btinternet.com

## CAMBRIDGESHIRE CLUBS

- CAMBRIDGE MORRIS MEN. Tuesdays in term time 8.15pm. Mayfield Primary School, Warwick Rd (off Histon Rd). John Jenner 01763 242127  
bagman@cambridgemorrismen.org.uk .
- CROSSKEY CLOG (Mixed Northwest). Wed 8pm, Wistow Community Hall, P/boro. Pete Stafford-Honeyball 01733 320252 or pete.staffordhoneyball@o2.co.uk
- DEVILS DYKE MORRIS MEN. Thursday 8pm. Bottisham Scout Hut. Randall Scott. 01223 208253. bagman@devilsdykemmm.org.uk; www.devilsdykemmm.org.uk
- ELY & LITTLEPORT RIOT, (Women's Border / own dances) Fridays, Maggie Kent, 01353 615503, smockmill@ntlworld.com
- FENSTANTON MORRIS (Mixed Cotswold). Mon in winter, 8pm, The Church Centre, Fenstanton. Email: fenstantonbag@gmail.com ; new "joint bags" are Penny James and Amy Pignatiello
- GOG MAGOG (Molly). Tues 8pm. Adam Hughes 01223 229996 adamoutside@yahoo.co.uk; molly@cusu.cam.ac.uk; www.cam.ac.uk/societies/molly
- GRANTA BLUE MORRIS (Young Mixed Cotswold). Practices Wednesday Evenings 8pm-10pm Nuns Way Pavilion, Nuns Way, King's Hedges, Cambridge CB4 2PF. Email cumorris@gmail.com; www.grantablueморris.co.uk; https://www.facebook.com/GrantaBlueMorris
- HEARTSEASE and ST NEOTS SWEEPS & MILKMAIDS: Thursdays Eynesbury C of E Primary School, Montagu Street, Eynesbury, PE19 2TD. Patti Pitt 01234 376278 pattipitt6@aol.com
- MANOR MILL MORRIS (Women's Northwest Clog). Mon in school term, 7.45pm, St. Augustine's Church Hall, Richmond Road, Cambridge. Andrea Lamble 01223 843529 manormillmorris@hotmail.com www.manormillmorris.org.uk
- MEPAL MOLLY Michael Czarnobaj 01353 666441 michael.czarnobaj@hotmail.co.uk
- OLD HUNTS MOLLY. Plough Monday/Straw Bear Festival. Robin James 01954 210650 or 07947 774482. Other contacts : see Fenstanton above
- PETERBOROUGH MORRIS MEN. Peterborough Sports and Leisure Centre, 651 Lincoln Road, Peterborough, PE1 3HA – Tues. 8pm 01733 206627 or 01733 705786 bagman@peterboroughmorris.co.uk
- PIG DYKE MOLLY. Mondays 8.15 pm. Burghley Square Club, Burghley Road Peterborough, PE1 2QA Peterborough. Sadie Heritage 01733 204505..info@pigdyke.co.uk; www.pigdyke.co.uk.
- ROCKINGHAM RAPPER & CLOG (Rapper and Appalachian) - Childer's Club, 1A Station Road, Whittlesey, Cambs PE7 1SA, Thursdays 8 – 10 pm - most - 07901 754064 or 07901 874513; rockinghamrapper@yahoo.co.uk; www.rockinghamrapper.org.uk; Facebook or Twitter@RockinghamSword; www.myspace.com/rockinghamrapper
- SUTTON MASQUE (Mixed, Border) Practices: Wednesday 7.30pm, Witcham Village Hall. Tel. 07789 419632; email: bagging@suttonmasque.org.uk ; www.suttonmasque.org.uk; Facebook: www.facebook.com/suttonmasque

## Up a Double and Back

It is now 3 years since I started writing for Mardles and I have touched on many aspects of social dance during this time. However, I feel that as I have completely run out of ideas for future articles, this will be my last. I hope to encourage one of you to contribute to the new Mardles online and bring a new perspective and new interviews.

I have been reflecting on the importance of dance in my life, from Maypole dancing in the 1950s to present day. I have become aware of the power of dance in making connections across barriers and I would like to share a few notable dance moments with you.

In the 1990s, whilst working with adults with learning disabilities, I was looking for an activity in which I could involve a small group of adults where challenging behaviour and the fear of touch was preventing them accessing group activities. I purchased a set of the Community Dance Manual tapes from EFDSS and used these as a starting point. I also acquired a set of practice garlands (half plastic hula hoops) and used these to connect the members of the group. We were then able to do simple dances, working as a group and progressed to some moves without the hoops. We also did some wheelchair dances. There was much laughter on these occasions and we all went home feeling a little better about ourselves, so quite an achievement through dance.

My set of CDM tapes went with me in 2001 when I travelled solo on the Trans-Siberian. I stayed for a few days with a family in Ekaterinburg. My host Alexander and I were both in our fifties with fathers who had fought in the 2nd world war. With little common language between us, we communicated through dance as I taught the family a simple dance to a traditional tune.

We stepped very lightly on the threadbare carpet in their soviet-style apartment and made a very special connection. Later on the same journey, whilst staying in Mongolia, I waltzed with a local herdsman to local music. This magic moment coincided with the attack on the twin towers, something I was unaware of until the following day.



*Chinese girls in dance costume*

In 2003, the CDM tapes travelled to China, where I taught English in a state school in a rural area on Hainan Island. Having managed to purchase a tape player, we started learning *Waves of Tory*, called in English. My first stumbling block was that the boys insisted on partnering the boys and the girls, the girls. We practiced outside with this unconventional line up and the headmaster allowed us to dance for a visiting official. This was another memorable dance

moment. I was also able to join in the girls' dance classes as they prepared for a festival where they were to perform a local agricultural dance.

In 2005, the CDM tapes travelled with me to Romania, where I was volunteering for 3 months in a state orphanage. The music struck a chord with Pedro, an 8 year old who had been living on the streets and looking out for his younger sister. He never joined in the dancing, but took control of the tape player, again purchased for the occasion. He would rock gently backwards and forwards on his bunk bed and relax in a way his life experiences had prevented. This was a highlight of my time in Romania and the tapes stayed with Pedro.

I purchased a set of CDM CDs which continued to travel with me. In Peru, in 2007, I stayed with a family in Huancayo, in the Central Andes and volunteered at a boy's orphanage. I played the music for Brayan, a severely disabled young boy, who responded well and we wheelchair danced around the grounds. I was able to share my love of dance with my hosts and they taught me their traditional nativity dance, where family members parade around the room with figures from the nativity. Every family gathering involved dance and I saw several dance festival parades.



*Local dancing in Peru*



*Costumed dancing*

In 2009, the CDs were used with withdrawn children in a Mexican orphanage, where they were helped to connect through dance. I also visited the local market square where dancing took place every Sunday evening whilst a local band played in the Bandstand.

I went on to use this set of CDM CDs when I called my first tentative dances at our dance club in Haughley during the winter of 2012. We have recently upgraded to an iPad so my C.D's are now old technology but we still use the same tunes.

My son has married a local Thai girl and lives in northern Thailand. I am about to visit my little granddaughter, who has just started a dance class. Maybe the CDM collection will introduce her to the joy of English Country Dance and I can learn about the local dance traditions.

Dance can make a real connection across language, cultural and emotional barriers .

I wish you a summer of happy dancing, wherever you are in the world.

*Helen Barrett – June 2017-06-14*

## **Dates for Your Diary**

Saturday October 7th 7.30p.m to 10.30p.m

The Combined Dance Club's Autumn Dance at Stowupland Village Hall. Caller Ron Coxall : Music by Heather and Ilona. Phone 01449 676491 / 01473 742015

## **The Norfolk Folk Association:**

- Aims to promote and encourage folk music and dance in the county.
- Runs Winter, Spring and Christmas Folk Dances near Norwich.
- Publishes FOLKLIST with details of Morris and Molly Sides, Local Dance Clubs, Folk Song and Music Clubs across the County.

We are keen to encourage new membership. Membership is not expensive so we would love to hear from you!

Contact Committee Members David Radnedge Tel: 01603 615524 or [peterushmer@hotmail.com](mailto:peterushmer@hotmail.com)

<http://norfolk-ceilidh.org.uk/NFA/>

---

## **Memoirs Of A Folk Dancing Man Sixty Years Of Folk Dance In Norfolk**

In the 1950s I was hooked on Folk by the lively style of Nibs Matthews' dances, which I came across in the Cheltenham area. These were enjoyable times, never to be forgotten. Returning to Norfolk, the scene could not have been more different. The Assembly House in Norwich was the setting for a Country Dance Ball, the programme having been given out well in advance so that participants could practice the dances in their classes beforehand. That was not for me!

Fortunately Ipswich had a fellow enthusiast like myself in Des Herring, who took a team to a festival at Stratford upon Avon, which I also attended. This was masterminded by Ron Smedley, the highlight of which was a memorable performance at the Scout Jamboree at Stoneleigh Park.

Back home, and under the guidance of Douglas Kennedy who encouraged investment in area representatives to promote folk music and dance, the EFDSS appointed Mar-

jorie Shepherd as their Eastern Area Representative. She travelled far and wide, with Kay Graham playing fiddle, to encourage the experience of Folk. Weekend courses were a feature; Chigwell and Caythorpe come to mind in particular.

Eventually a big day came with a memorable festival being held in The Lads' Club in Norwich that included songs from Bob Roberts, barge skipper from Pin Mill on the River Orwell, and Dick Hewitt, step dancer from Southrepps, Norfolk, along with Morris, Sword and Square dancing demonstrated by an impressive array of teams from our region.

Folk was on the up and numbers attending dance classes increased. This was recognised by the BBC who gave us weekly half-hour programmes live from all parts of the country with local bands and callers. If we listened carefully we would pick up dances that were not to be found in the Country Dance Manuals!

Eventually, and possibly inevitably, however, the time came when the EFDSS could no longer afford an area representative for our region, although annually we were able to join teams of dancers from across the country to give public performances in no lesser venue than The Royal Albert Hall, following the highly essential afternoon rehearsals!

Local membership became so strong in Norfolk that we were able to present Folk East '80, in 1980, offering 12 hours of Folk in St Andrew's Hall, Norwich. Other memorable events included the Norfolk and Norwich District Jubilee Dance, originating in 1913 and running successfully until 1973, with the gifted John Lagden. He will long be remembered for his ability to call and play the piano at the same time, while keeping an eye out for a dancer out of step! As time went by we were introduced to more and more dances, including the historical ones from Playford and other dancing masters, while local clubs and callers presented others for special occasions.



In spite of this, and surprisingly, it proved very difficult to encourage newcomers to folk dance and attempts to do so usually failed. Sadly, numbers continue to decline to this day. Is it that they are put off, confused by the call for 'a figure of eight' or a 'back to back', then further confounded by another dance with a different set of movements? ...is it all too much, or is it simply that there is less pride in our national traditions these days and so many other distractions?

Our centenary in 2013 passed unnoticed; we had little to celebrate with falling numbers and dance clubs struggling to keep going with fewer regulars. It was not only clubs and venues that suffered; back in the eighties our District's activities were organised by a committee of fourteen. Today the Norfolk Folk Association strives to maintain a quorum of four with great difficulty!

However, it is not all doom and gloom for the committed and enthusiastic dancer! In Norwich, Norfolk Ceilidhs run a highly successful dance once a month at the John Innes Centre during the Autumn, Winter and Spring of the year, dancers being enthused by a hand-picked selection of accomplished live bands and callers: a winning formula! ([www.norfolk-ceilidh.org.uk](http://www.norfolk-ceilidh.org.uk)) And while Sidmouth, Litchfield, Whitby, Towersey, Cambridge, Folk East (now Suffolk based), and many more festivals nationwide continue to be the life blood of folk, there are other opportunities those interested can exploit around the country if dancers are prepared to travel. Dancing and walking at Willersley Castle in Derbyshire is popular, as are events such as those held at Halsway Manor in Somerset and, of course, those run by the EFDSS at Cecil Sharp House in London, the home of English Folk.

*David Radnedge, Hon. Secretary of The Norfolk Folk Association.*

# Bury Folk Collective

**Live grass roots folk music in**

## Bury St Edmunds



**Regular nights every month**

**First Monday**  
**Traditional Unaccompanied**

**First Wednesday**  
**Contemporary**

**Third Wednesday**  
**From the Tradition**

**Last Thursday**  
**Wired**

**Check our website for details**

**[buryfolkcollective.co.uk](http://buryfolkcollective.co.uk)**

**All welcome. Please email  
if you want to perform.**

**[Contact@buryfolkcollective.co.uk](mailto:Contact@buryfolkcollective.co.uk)**



**/buryfolk**



## The Search for A Local Repertoire

What does a singer do when s/he moves from one part of the country to another, apart from look for new places to sing?

Well, this one (myself) looks for new material from the area.

Yorkshire and the north of England are well endowed with collected song. So are the Southern counties. Even Norfolk and Suffolk have a huge repertoire, much of it still being sung in pubs and clubs in the counties. But Cambridgeshire? Whoever heard a song from Cambridgeshire?

Digging around in my song collections, notably Bronson and the Penguin book, I came upon one song – *Lucy Wan*. Not quite the thing to be singing to your primary school workshop as it is a murder ballad precipitated by an act of incest. Nevertheless, the small print associated with the song's publication in the Penguin book gave some intriguing clues. The song was catalogued in the Lucy Broadwood collection in the Vaughan Williams Library in Cecil Sharp House. A little trip to London was called for.

The relevant documents are all now published digitally online, but back in the day when I started my quest for local songs one had to take oneself to the library and sit with bits of paper and a pencil.

I discovered copious correspondence between one young Cambridgeshire woman, Ella Bull, and Lucy Broadwood, the editor of the Folk Song Journal during the years 1904–11. Later biographical research showed that she was in her early 30s when she was sending her collection to Lucy Broadwood. She was blind from birth with four other sisters, two of whom were also blind.

The papers revealed that Ella had sent lots of songs – texts and melodies – to Lucy Broadwood, but at some very late stage had



*Ella Bull, a song collector from Cottenham, in about 1910*

withdrawn her permission to publish because she was not sure of her notation. Many of her informants, notably Charlotte Dann who had been a family servant and who lived very close to the Bull family home, sang in a less orthodox time signature of 5/4. Ella was finding it difficult to get the rhythm of the songs correct and in the event stopped the publication.

Interestingly, Ralph Vaughan Williams visited Charlotte Dann in Cottenham in 1907, probably on a tip-off from Lucy Broadwood. He notated *There is an Alehouse* and *Lucy Wan*, both of which are in 5/4, without turning a hair.

The Vaughan Williams manuscripts are in the British Library – for reasons I know not, they were not left to the EFDSS by his widow, Ursula. They are fascinating to read, showing how rapidly he had to notate both tunes and words if taking down a song in an alehouse – something he frequently did. Many of the



*Charlotte Dann, photographed in the 1930s*

Cambridgeshire songs he collected are from a family holiday he took in 1906 to Meldreth, where he stayed for the best part of a month. He no doubt took or borrowed a bicycle because he turned up at many of the surrounding villages with his notebook and pencil. In 1906 and the following year he travelled to Cottenham and places using the local railway lines, calling at Fen Ditton, where an old history tutor of his from Trinity was living; Wilburton; Royston workhouse and Bassingbourn. In 1908 he went to Orwell, possibly to visit the son of a Greek don as a preparation for his composition of the music for *The Wasps*. Whilst there he met Billy Waggs (William Wagstaff) at the Red Lion, who sang a version of *The Proud Pedlar* and a version of the *Seeds of Love*.

Cecil Sharp was another Cambridge graduate (his manuscripts are in the archives of Clare College) and he visited Cambridge-shire in 1911, ostensibly to collect children's songs. He spent a Saturday at Littleport Girls' School notating singing games from a pupil. He also visited Ely and surrounding villages along with the Workhouse where he bagged a fine crop of songs and tunes.

Many of these songs collected by Ella Bull, Ralph Vaughan Williams and Cecil Sharp were only part-remembered. Sometimes only the tune was recorded in manuscript form – a very frequent occurrence with RVW.

Now you have lots of songs and tunes, many of which are only one or two lines or perhaps only a title and a tune. The next job is to find or complete a text that will fit the tune as noted. You really cannot sing a song with huge chunks of the action missing or garbled.

This is not always easy, particularly when the tune title is ambiguous and used for several completely different texts, such as *Abroad As I Was Walking* (see overleaf). Fortunately there are some excellent online resources for broadside texts. I would highly recommend the Bodleian Library collection. It has digitised copies of most of the broadsides produced in England over several centuries. There you are almost bound to find a suitable set of words to complete your song.

The hardest and final part of getting your new repertoire up and running is interpreting and arranging the song. Many, if not most, of the songs as sung to the collectors would have been unaccompanied. Falling in with modern sensibilities, an accompaniment is frequently preferable and often enhances the meaning of the song. This can take weeks to compose and refine. Only then is the song finally ready for the club or concert platform.

*Mary Humphreys ~ June 2017*

## Abroad as I was walking



Abroad as I was walking down by a riverside  
 In gazing all around me, the Irish girl I spied.  
 Oh red and rosy were her cheeks and coal black was her hair.  
 All around her waist was a sash like gold that my Irish girl did wear.

Her shoes of Spanish leather all spangled round with dew.  
 She wrung her hands and tore her hair crying, "Oh what shall I do?  
 My true love's gone and left me for a girl of high degree.  
 Why do you go a-roving and slight your own Polly?"

The first time that that I saw my love was in the market square.  
 The look that passed between us it did my heart ensnare.  
 But cruel fortune played its hand and we were forced to part.  
 Oh love it is a killing thing, will surely break your heart.

I wish my love was a red red rose and in the garden grew  
 And me to be the gardener, to him I would prove true.  
 There's not a month but in the year my love I would renew.  
 With lilies I would garnish him, Sweet William, Thyme and Rue.

I wish I was a butterfly, I'd fly to my love's breast.  
 I wish I was a linnet, I would sing my love to rest.  
 I wish I was a nightingale, I'd sing till morning clear.  
 I'd sit and sing for you my love, the one I love so dear.

I wish I was in Manchester all seated on the grass.  
 A jug of wine all in my hand, my head on my love's breast.  
 I'd call for liquor of the best and we'd pay before we go.  
 I'd hold my true love in my arms let the wind blow high or low.

**Saturday  
2nd September  
2017**

---

**Museum of East Anglian Life  
Stowmarket, Suffolk  
11am - 5.30pm**

---

A fabulously eclectic day of traditional  
music, dance & song in a magical setting

---

**Jackie Oates  
Jimmy Crowley  
Jim & Lynette Eldon  
Carol Anderson  
Racker Donnelly  
Pigeon Swing**

---

Music & Song Sessions  
Stepdancing  
Day & Evening Concerts  
Talks & Sessions  
Song trail around the farm  
Jig Dolls  
Afternoon Ceilidh  
Ballads & Stories  
+ *mini beer festival*

---

"A really special, lovely festival, simply the best  
time I've had for ages." - Shirley Collins

---

For further details and tickets, see:  
[www.eatmt.org.uk](http://www.eatmt.org.uk) or ring 01449 771090  
*Tickets in advance only*

**Traditional Music Day**

**East Anglian Traditional Music Trust**



## The Bounty Hounds Boxed In

[www.bountyhounds.co.uk](http://www.bountyhounds.co.uk)



The Bounty Hounds are a very popular Suffolk-based folk/rock band that has been around since 2006.

This CD reflects their stated style, influenced by bands such as Fairport Convention and the Waterboys.

Right from the first track (*When I'm Up*) the music is hard and on the beat. It accompanies songs that tell a story, so you have to listen as well as tap your feet. Fortunately, the lead singer John Bosley has a strong voice and good diction so it was easy to follow the various plots.

I would like to have heard more instrumentals on this CD. I had to wait until track 9 (*March Hare*) to hear the band in full swing. This track featured box player Robbie Nash playing an interesting tune with an unusual rhythm which I thoroughly enjoyed.

The final song *Ginger Billy* was a gentler finish to a well-produced CD.

For followers of this band and folk/rock generally this is a fine example of the genre and well worth a listen.

*Jill Parson ~ June 2017*

## Sedbuskers The Lady in the Lake

[www.bullenbushmusic.co.uk](http://www.bullenbushmusic.co.uk)



The Sedbuskers is a collective name for the main artists on this CD: Ian and Sue Bembridge. They run a ceilidh band called the Bullenbush Band, along with others and also work as a duo, performing mostly their own songs. There are two traditional folk songs on this album: *The Tinker Man's Daughter* and *House Carpenter*, both of which they execute very well and with good musical style and arrangement.

Halfway through this CD I realized I was very much reminded of other folk artists from a good while ago, and having read the following press review, I now realize who those artists are.

Hannah Thomas, cellist of Solasta, wrote of the album:-

"I was instantly transported by their skilled arrangements and witty lyrics. Ian performs with an energetic vitality, complimented by Sue's beautiful transcendent vocals and haunting recorder. There is an array of musicians which Sedbuskers remind me of including Pentangle and Jethro Tull, but ultimately they have their own individual style mixing folk and rock characteristics."

Taking a quote from their own website (see above), "Sedbuskers, often referred to as the Bullenbush Band duo, are songwriters Sue and Ian Bembridge. The Lady in the Lake was released in April 2016 and was their first release under the Sedbuskers banner. The album features nine original songs plus two original arrangements of traditional songs. Sue is a talented singer and accompanies Ian on piano accordion, various recorders and guitar. Ian sings, plays mandocello, guitars and bass. This album also features guest musicians on fiddle, drums and bass. The songs tell stories, describe situations and reflect on historical events."

The very first track surprised me, as I hadn't realized that most of the Bembridge's songs are self-penned and based on true stories. When the refrain came in as "Margaret....you should have known better", I was gripped, as it reminded me of what my Dad used to say to me when I'd done something silly. However, although their compositions contain a deal of gentle humour, they are also often quite dark, but not depressing to hear.

I particularly liked the fact that they have written about the plight of the *Girls of Ipswich Town* who were all murdered by the same man a few years ago, making a "plea for understanding for those who are often victims of circumstance".

I would urge you to at least listen to the sample tracks on the web site, and see what you think.

Maggie Moore June 2017

## **Moirai**

### **Here and Now**

### **WildGoose WGS421 CD**

The Moirai were, in Greek mythology, three white-robed incarnations of destiny and, according to the sleeve notes for the present incarnation of the Moirai's CD 'Here and

# **PETE COE**

A new CD

## **"The man in the red van"**

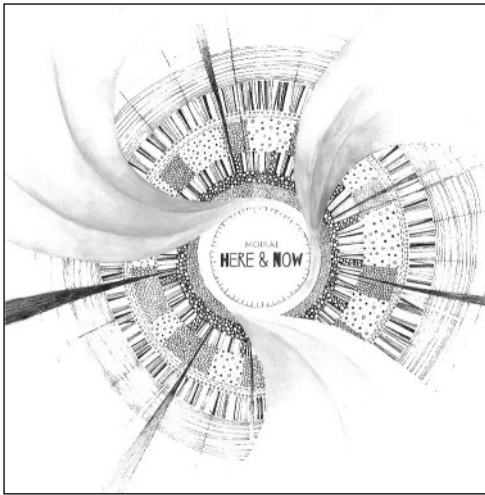
**Folk songs and ballads  
with  
melodeon, bouzouki,  
banjo, guitar, dulcimer**

**King Henry , Spanish Lady,  
Joseph Baker, Jack Hall,  
The Banks of Red Roses,  
Farewell to the Brine,  
The Walls of Troy, The Footboy,  
World of Misery, Ash and Alder**

*"He is still one of the most committed,  
most versatile, most important  
folk artists in Britain"*  
( Colin Irwin MOJO )

**£12 (inc) available via Paypal  
Or cheques to Backshift Music**

**103 Oldham Road, Ripponden,  
West Yorks HX6 4EB  
01 422 822569 or  
petecoe@backshift.demon.co.uk  
www.backshift.demon.co.uk**



Now', "Gods and men had to submit to them!" In a poor light I first read that as "Goats and men", which sounds equally as interesting...

Moirai are Jo Freya, Sarah Matthews and Melanie Biggs, well known, apart from forming Moirai, for previous work with Blowzabella, Token Women, Cupola and others. Between them they play sax, clarinet, violins, viola, melodeon, flute and sing. A good pedigree, then.

Despite that, I have to say that I was a bit disappointed with the first few tracks on the CD when I first listened, as they didn't really grab me; the first, *Dust If You Must*, rather bizarrely having lyrics that were anonymously posted on Facebook. *Rolanda's Grandmother* has powerful words and tells the story of wartime atrocities, but the content was a bit too obscure to engage me.

However, things picked up with *Doffin Mistress*, a version of the relatively well-known song from the linen mills, which is the followed by the lovely tunes *Muna* and *Mimi/Steve Fisher's Lament*.

To my ears, the tune sets and songs that work the best are *The Bedmaking*, telling the old, old story of the serving girl pursued by the boss with inevitable consequences nine

months later; *The Bellamont Sisters* (written by Sarah) recording how the Swarkestone Causeway Bridge came about through lost love occasioned by drownings of prospective husbands in the Trent; and the tunes *Brexit Biscuits/Calarem*, *Calarem Pas* with their slightly Eastern European feel.

Overall this is an enjoyable CD, well executed as one would expect from talented musicians, but some of the songs didn't really feel very involving. But perhaps that's just my jaded ears; maybe you'll think differently, if you give it a listen, and prove me wrong.

Chris Sullivan ~ June 2017

## Two Coats Colder Moment In Time

[www.twocoatscolder.com](http://www.twocoatscolder.com)



Two Coats Colder have only been playing together since 2011, although their individual careers span many decades! *Moment In Time* is their second album, following the success of their debut album, *Unseen Highway*.

The band consists of Ray Taylor on acoustic guitar and vocal, Anna Bass, harmonium and vocal, David Baird, mandolin and vocal and Chris Bullen, bass guitar, electric guitar and vocal.

For those of us of a certain generation the music of Two Coats Colder fuses the folk

rock of our youth with modern day songs of love, struggle and protest. If you are under 30 years old you will find a youthful zest of rebellion that epitomises the spirit of mankind.

Two Coats Colder possess a superb mix of musicianship – Anna Bass has a voice to die for, Ray Taylor can make his guitar sing, David Baird has become a magician on the mandolin, filling the songs with an incessant drive, and Chris Bullen brings a traditional pop band bass guitar to life with his folk interpretations – oh, and he makes an electric guitar “weep”.

This four-person band has been rapidly making a lasting impression amongst the folk clubs, music venues and Folk Festivals around the country (including local venues such as Ely, Folkstock, Clare, Oxjam, Milkmaid, Cambridge, Royston, and Colchester).

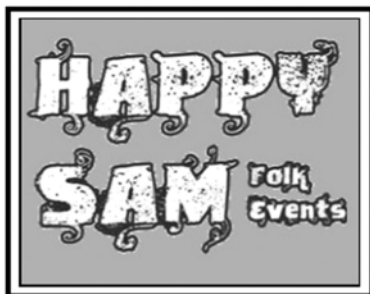
Of the 14 songs on *Moment In Time*, all but 4 are written by the band. The 4 are covers of *Diamonds and Rust* by Joan Baez, *As Tears Go By* by the Rolling Stones, *Confession* by Richard Shindell and the classic folk song *Mary Ellen Carter* by Stan Rogers (featured in the Mike Harding Podcast #227).

Of their own compositions, the rest of the album is a holistic mix of fun, pathos, reflection and lament. Big choruses are often featured, allowing hearty audience participation at their live gigs. Personal favourites include *Iron Horses*, telling the story of the lives of the labourers who built Britain’s railways, and *First Nations*, a song about indigenous people facing the cost of invasion from the developed world.

All the words can be easily found on their excellent web site. Do go and see them if you have the chance, even if it’s just to find out why they call themselves “Two Coats Colder”.

Mike Rudge ~ May 2017

## Folk Events with a difference



Performance with  
Meet the artist + Session  
Bring tunes, songs to share  
or just come for fun

**15th September t.b.a**

**20th October £6**

**Martyn  
Wyndham-Read**

**2nd December £7  
Flossie Malavialle**

Party night Guest + Session  
Faith Supper  
Contributions most welcome


Bredfield Village Hall  
(Near Woodbridge)  
IP13 6AX

7.30 for 8.00 pm start

No bar - BYO  
honesty ale barrel

Charity table -CD's etc.  
all profits/donations to  
Suffolk Mind

[www.happysam.co.uk](http://www.happysam.co.uk)

 **Happy Sam Folk Events**



## Jim Causley and Friends I Am The Song WildGoose WGS420CD



This is an absolutely delightful album of songs for children that can be enjoyed by kids of all ages.

'I Am The Song' is subtitled 'The Children's Poems of Charles Causley' and is performed by Jim Causley and friends.

Jim Causley is a folk singer and musician from Devon who specializes in the traditional songs and music of the West Country. Hailing from the village of Whimble in East Devon, Causley was born in Exeter and is a relative of the Cornish poet Charles Causley. Jim Causley grew up surrounded by traditional music from his family, from his village in the heart of Cider Country with its thriving wassailing tradition and its close proximity to Sidmouth and Dartmoor folk festivals, and from being a long-standing member of the Pennymoor Singaround. After studying Performing Arts and Jazz & Popular Music at Exeter College, Causley went on to study Folk and Traditional Music at the University of Newcastle upon Tyne. It was during this time that he began gaining a reputation as talented singer on the wider UK folk scene.

Charles Causley was born at Launceston in Cornwall in 1917 and became a much loved and celebrated writer. There was a campaign to have him appointed Poet Laureate on the death of John Betjeman, but to the people of his home town, he became "the greatest poet laureate we never had". There now exists a Charles Causley Trust, set up to promote the poet.

Jim Causley has already released an album of songs from the poems of Charles – 'Cyprus Well' in 2013. Cyprus Well is the name of Charles' cottage. This album focuses on the children's poems of his ancestor and is great fun. The Trust commissioned Jim for a new project and hence the focus on the kids' poems. He has also garnered a whole host of guest musicians on the album, including Nick Wyke and Becki Driscoll on fiddles, Keith Kendrick on Anglo concertina, and our very own Mary Humphreys and Anahata (see if you can spot Mary playing the banjo or concertina and Anahata playing 'cello and melodeons). All the music is superb, showcasing the talent of the contributors. In addition, mention must be given to the fabulous artwork on the sleeve created by Bex Bourne.

There are 21 tracks jammed into the disc – some wacky tales, some strange tales, the odd sad tale, many counting songs and songs of fantasy, such as *Mrs McPhee* who serves duck for all her meals and then becomes a duck!

Kids will love the songs and there could be no better way to introduce little ones to traditional folk music. For the older ones amongst us, it is a superb exposition of a talented musician and a marvellous vehicle for keeping alive the work of a great poet.

*Mike Rudge ~ June 2017*



## ~ THE SHIP INN ~ BLAXHALL

A Free House



**An old traditional Suffolk Pub**  
**A wide range of Real Ales**  
**Good Home Cooking**  
**B & B accommodation -**  
**8 en-suite rooms**  
**Music and song any time**  
**[www.blaxhallshipinn.co.uk](http://www.blaxhallshipinn.co.uk)**  
**Tel: 01728 688316**  
**or call Terry on 01394 282033**

## 7<sup>th</sup> WEYBOURNE FOLK WEEKEND AT WEYBOURNE VILLAGE HALL AUGUST 18<sup>th</sup> 19<sup>th</sup> 20<sup>th</sup> 2017

**Local Singers / Musicians**

Plus Special Guests

**Two Coats Colder**

**Badly Worn Boys**

**Andrew Stannard**

**Roger Gamble**

**Nigel 'Boy' Syer**

**Blakeney Old Wild Rovers**

**Sarah O'Neil**

**Cathy Martini**

**Five String Thing**

**Webbun All-Stars**

**Saturday Night Ceilidh with Blancoes Yard**

Further details from Tony Baylis 01263 588781

or email [tonyandcarmen@btinternet.com](mailto:tonyandcarmen@btinternet.com)

Visit our web site

[www.webbunfolkfest.com](http://www.webbunfolkfest.com) & Facebook

# On-Y-Va! French Dancing

8.30pm - 10.30pm - Entrance £4 - Workshop for musicians from 7.30pm

On-Y-Va are hosting their club nights on the fourth Tuesday of the month, meeting next on Tuesday 26th September 2017 at 7.30pm for musicians and 8.30pm for dancers.

Based at the comfortable and easily accessible Riverside Centre at Stratford St. Andrew, Saxmundham, the club offer a musicians workshop prior to the dancing (not suitable for beginners), and then dance tuition begins from 8.30pm.

No dance partners are required. If you enjoy dancing, socialising or just listening to good music, put the date in your diary.

Riverside Centre, Gt. Glemham Road,  
 Stratford St. Andrew, Saxmundham, IP17 1LL

For more info: Monica on 01728 830085  
 or Lin on 01728 602465

Email: [frenchdancer2004@yahoo.co.uk](mailto:frenchdancer2004@yahoo.co.uk)

• 26 September 2017 • 24 October 2017  
 • 28 November 2017

• December 2017 - Break

• 23 January 2018 • 27 February 2018  
 • 27 March 2018 • 24 April 2018  
 • 22 May 2018



**A LAISE BREIZH!**

# Artistes Bands, Callers, Singers and Musicians

## Dance Bands

|   |  |
|---|--|
| Abandon   | 01366 377612   |
| arm-in-arm  | 01223 834678   |
| Bacon Butty Band  | 01508 530005   |
| Battered Haggis   | 01728 747951   |
| Bof! (French)   | 01359 241696   |
| Catch The Pigeon <a href="http://www.catchthepigeon.uk">www.catchthepigeon.uk</a> |  |
| Cajun Two Steps   | 01733 266153   |
| Clutching at Straws   | 01284 767476   |
| CottonHouse   | 01728 831531   |
| Downham Reach   | 01473 780432   |
| Ducking & Diving  | 01206 298568   |
| Fen Blow  | 01353 740101   |
| Fezziwig  | 01953 604013   |
| Hannibal's Heroes   | 01733 266153   |
| Happy Feet  | 01953 601400   |
| Hosepipe Band   | 07818 417780   |
| Hoxon Hundred   | 01379 643563   |
| Hunt the Wren   | 01255 674889   |
| Inertia Reel  | 01473 728209   |
| Jigsaws   | 01473 625482   |
| Keel Band   | 01263 577885   |
| Leaping Hare  | 01508 548659   |
| March Hares   | 01354 656208   |
| Metric Foot   | 01621 853941   |
| News of the Victory   | 01945 781152   |
| Parson's Nose   | 01234 376278   |
| Pendragon   | 01379 741767   |
| Pluck'N'Squeeze   | 01449 722615   |
| Proper English Dance Band   | 01277 211365   |
| Red Herrings  | 01603 615305   |
| Skylarking  | 01359 244692   |
| Shinanikins   | 01603 880345   |
| Skip Hire   | 01502 588137   |
| Snakecharmer  | 07930 430752   |
| Snapdragon  | 01379 740366   |
| Speed the Plough  | 01206 298568   |
| Spit & Polish   | 01473 735771   |
| Syzewell Gap  | 01394 450697   |
| Valiant Dance Band  | 01449 673695   |
| Wide Glide  | 01638 751483   |
| Whirligig   | <a href="http://www.whirligigmusic.co.uk">www.whirligigmusic.co.uk</a> |
| Willowspin  | <a href="http://www.willowspin.co.uk">www.willowspin.co.uk</a>         |
| Xim   | 01603 505910   |
| Zaramo  | 01508 480195   |

## Concert Bands

|                        |              |
|------------------------|--------------|
| Bards of The Heath     | 01473 626954 |
| Battered Haggis        | 01728 747951 |
| Cambridge Crofters     | 01223 880553 |
| CottonHouse            | 01728 831531 |
| Fiddlers Elbow         | 01206 860719 |
| Harbour Lights Trio    | 01473 610951 |
| Hare's Breath          | 01728 668250 |
| Hunt the Wren          | 01255 674889 |
| Potiphar's Apprentices | 01277 221123 |
| Rosewood               | 07818 417780 |
| Silbury Hill           | 07887 918869 |
| Sound Tradition        | 07547 904801 |

## Callers

|                           |              |
|---------------------------|--------------|
| Kate Badrick              | 01787 378325 |
| Elaine Barker             | 01206 735606 |
| Heather Bexon             | 01449 615816 |
| Gill Bosley               | 01284 767476 |
| Pete Cunningham           | 01379 890088 |
| Helen Howe                | 01473 717979 |
| Jill Parson               | 07901 507897 |
| Norman Pottinger          | 01394 271282 |
| Pete Shaw                 | 01778 571563 |
| Phil Smith                | 01473 415738 |
| Mike Veale (Kevin Aswell) | 01603 928804 |

## Singers/Musicians

|                           |              |
|---------------------------|--------------|
| Mike Acott                | 01728 768128 |
| Paddy Butcher             | 01359 241696 |
| Laura Cannell MMus BMus   | 01508 548659 |
| Capstan Full Strength     | 01728 768128 |
| Dave Cooper               | 01328 838271 |
| Folk On The Hill          | 01473 658487 |
| Alex Goldsmith            | 07747 186972 |
| John Goodluck             | 01473 626954 |
| Mike Green & Dave Tricker | 01473 213740 |
| The Harvs                 | 01379 640353 |
| High Water Mark           | 01473 780625 |
| Peter Hood                | 01502 566656 |
| Kettle Girls              | 01449 615816 |
| Colin Snell               | 01284 810454 |
| Maggie & Stan             | 01449 722615 |
| Norfolk Gallery Quire     | 01328 838271 |
| Royal Marine Shanty Crew  | 01255 860432 |
| Tin River                 | 07881 279877 |
| Triangle                  | 01394 274395 |
| John Ward                 | 01502 588137 |
| XXL                       | 01394 420735 |



## The Milkmaid Folk Arts Centre Railway Station Refurbishment



### **The Milkmaid helping Disadvantaged and Vulnerable people access the Folk Arts!**

Please **help** us raise money to refurbish part of Bury St Edmunds railway station. We are turning it into a Folk based arts centre which will accommodate people with disabilities and mental health issues access the folk arts during the day. The evenings and weekends will be for the whole community to enjoy, participate and create folk music, song and dance, making this an important new venue on the folk circuit!

The whole cost of the refurbishment is £540,000 of which we have raised £168,000.

Donations can be made through our donations page on our website [www.milkmaidcentre.com](http://www.milkmaidcentre.com) or go straight to [www.milkmaid.charitycheckout.co.uk](http://www.milkmaid.charitycheckout.co.uk)

You can donate a 'one-off amount' or sign up to a monthly standing order which will give us a regular amount coming in through the year.

**Anything you can afford from £1 to a million pounds will be gratefully received!**

Information:

**4 & 5 Railway Buildings, Fornham Road, Bury St Edmunds, Suffolk IP32 6AH Tel. 07749 299377**

Email: [milkmaidterry@yahoo.co.uk](mailto:milkmaidterry@yahoo.co.uk) Web: [www.milkmaidcentre.com](http://www.milkmaidcentre.com)

# Club and Session Guide

For amendments to the Club and Session Guide, please phone Sue Lawrence on 01449 766747 or email [listings@suffolkfolk.co.uk](mailto:listings@suffolkfolk.co.uk)

If you know of a new session or are aware that a session has ceased to exist, please phone Sue or send the details to listings.

## SUFFOLK CLUBS

[www.suffolkfolk.co.uk](http://www.suffolkfolk.co.uk)

ALDEBURGH COUNTRY DANCE CLUB. Church Hall, St Peter & St Paul. 2nd and last Wednesdays 11am. Helen Gardner 01728 453993

BECCLES U3A ENGLISH COUNTRY DANCE GROUP. Quaker Hall. 2nd & 4th Wednesdays 10.00am-12noon. Ian McIntyre 01493 488396

BURY BAL. French & Breton dance & music workshop: Constitutional Club, 12 Guildhall Street, BSE IP33 1PR. 4th Tuesdays (not Aug or Dec) 8pm. Jan Taylor 01842 763626 [burybal@taylor-d-gardens.co.uk](mailto:burybal@taylor-d-gardens.co.uk) or Steve Kellett [burybal@sprezzaturra.co.uk](mailto:burybal@sprezzaturra.co.uk)

BURY ST. EDMUNDS: Mid Suffolk Folk Dance Club, Whiting Street Church 8pm Sundays Aug 6th, Sept 3rd, Oct 1st, Nov 5th 01473 742015/01449 676491 [midsuffolkdance@gmail.com](mailto:midsuffolkdance@gmail.com)

BURY ST. EDMUNDS REEL CLUB. (Scottish). Wednesdays 7.30-9.30pm, St James Middle School Dining Room. Marie Neal 01284 810272

CAPEL IRISH and CEILI DANCING. St Mary's Church Hall, The Street, Capel St Mary, IP9 2EL. Beginners always welcome, no partner required. Chris Haste 01473 311615 or [chris.haste01@btinternet.com](mailto:chris.haste01@btinternet.com)

CIRCLE DANCING. Drinkstone Village Hall. Thursdays 10-11.30 am. Gentle fun dancing in a circle to music from all over the world, no partners needed. Jen Larner 01284 705548. [jenlarner@gmail.com](mailto:jenlarner@gmail.com)

CIRCLE DANCING. Friends Meeting House, St John's Street, Bury St Edmunds. 1st Mondays & 3rd Tuesdays 7.30-9.00pm Gentle fun dancing in a circle to music from all over the world, no partners needed, just turn up. Jen Larner 01284 705548. [jenlarner@gmail.com](mailto:jenlarner@gmail.com)

DANCE FOLKUS Woodbridge Community Hall, Station Rd IP12 4AU: Harbour Lights Come All Ye Band 1st Fridays 7.30pm. Come & try dancing or playing in the Band or try calling a dance. Led by Harbour Lights musicians & lead caller Helen Howe. Rob Neal 01473 610951 [dancefolkus@aol.com](mailto:dancefolkus@aol.com)

GRUNDISBURGH FOLK DANCE CLUB. Village Hall. Mondays during term time, 7.45pm. Sally Talbot 01473 735788.

HAUGHLEY: Village Hall Mid Suffolk Folk Dance Club 7.30pm Every Thursday Aug, Sept, Oct, Nov (not Aug 24th, Oct 27th) 01473 742015/01449 676491 [midsuffolkdance@gmail.com](mailto:midsuffolkdance@gmail.com)

HIGH SUFFOLK SCOTTISH COUNTRY DANCE GROUP. Fridays 8pm. September to May. Yaxley Village Hall. Ann Bennoch 01379 641476

IPSWICH ANGLO SCOTTISH SOCIETY. Beginners & Intermediates 2pm Tuesdays at Rushmere Village Hall, Humber Doucy Lane. £2.50. Jim 01473 710215 [jim.cranmer@ntlworld.com](mailto:jim.cranmer@ntlworld.com). Evening groups at Felixstowe & Debenham. Sec Christine Erskine 01206 303375 [christine@cerskine.co.uk](mailto:christine@cerskine.co.uk) [www.ipswichscottishdance.org](http://www.ipswichscottishdance.org)

IPSWICH FOLK DANCE CLUB. St John's URC Hall, Cowper Street IP4 5JD. 1st & 3rd Tuesdays (not August) 8pm-10pm. End of season dances: Jul 18th, Dec 19th- please bring a plate of food to share. John Adams 01473 710406

IPSWICH SHIRTS 'N' SKIRTS. American Square dance. Wednesdays 7.30pm. Kesgrave All Saints Church Hall, (near the Bell PH). Yvonne Holcrosst 01394 610548

LAVENHAM SCOTTISH DANCERS. Mondays 8pm. Sep-Apr. New Village Hall. £3. John Busby 01284 830138

LOWESTOFT FOLK DANCE CLUB. Wednesdays 7.30pm, St. Marks Church Centre, Bridge Road, Oulton Broad. Neville Oxborough 01502 713872



LONG MELFORD Old School: Friendship Dancers. East European dance. Wednesdays (term time) 3.00pm-5.00pm Robin Hart 01787 269613 robinehart@hotmail.co.uk

KELSALE Village Hall: Line Dancing. Mondays 11.30am - 2pm. Sue Mallion 01728 604627

STOWMARKET Red Gables, Ipswich Road, Stowmarket IP14 1BE: Dancing 2nd & 4th Tuesdays 7.45pm. Helen & David Howe 01473 717979 helenmhowe@yahoo.co.uk for further details & dates

ON-Y-VA French Dance & Music Club: Riverside Centre, Stratford St Andrew IP17 1LL. 4th Tuesdays 7.30-8.15pm musicians workshop; 8.30-10.30pm dance workshop & free dance Lin Barnes 01728 602465 frenchdancer2004@yahoo.co.uk

STOWUPLAND: Village Hall. Combined Dance Clubs. Autumn Dance Saturday Oct 7th with Caller Ron Coxall. Live music by Heather & Ilona 7.30pm-10.30pm Please contact Mid Suffolk Folk Dance Club for details. 01473 742015/01449 676491 midsuffolkdance@gmail.com

WETHERDEN: Village Hall. Mid Suffolk Folk Dance Club 8pm Fridays Aug 4th, 18th; Sept 1st, 15th, 22nd, 29th; Oct 6th, 20th; Nov 3rd, 24th 01473 742015/01449 676491 midsuffolkdance@gmail.com

## **Music & Song Clubs**

BURY FOLK COLLECTIVE: Oakes Barn, St Andrew's St South, Bury St Edmunds IP33 3PH. 1st Mondays 8pm. 1st & 3rd Wednesdays 8.00pm-10.30pm. last Thursdays See individual days below for more detail. www.buryfolkcollective.co.uk (see ad)

COME AND JOIN THE BAND: The Ark, Needham Market. Learn traditional tunes in G & D. 2nd Thursdays 7.30pm. Stan 01473 832565, Maggie 01449 722615

EVERYMAN FOLK CLUB: Riverside Centre. Stratford St Andrew. Last Fridays. 8pm. £6 (£5 in advance). 01449 615523 everyman@wheatstone.co.uk www.wheatstone.co.uk (see ad)

HADLEIGH FOLK AND ACOUSTIC MUSIC NIGHTS: The Ansell Centre, Market Place, Hadleigh, IP7 5DL. Usually the 1st Friday of the month 8.00-10.30pm. Entry £5. Simon Haines 07818 417780 / 01473 828745 (see ad)

HALESWORTH FOLK CLUB: The Triple Plea Halesworth. Every Friday 9pm-11pm. informal singaround.

HAPPY SAM FOLK EVENTS: happysam@reallyneat.co.uk www.happysam.co.uk

HENLEY FOLK NIGHTS: Henley Community Centre, Boughton Room. 8pm 3rd Fridays (not Aug or Dec) Mike Briggs mike@mikesound.co.uk 01473 831465

MILKMAID FOLK CLUB: Constitutional Club, 12 Guildhall St, Bury St Edmunds, IP33 1PR. Mainly 1st & 3rd Fridays. John Bosley 07980 840220 milkmaidjohn@yahoo.co.uk www.milkmaidmusic.co.uk (see ad)

STANTON MUSICIANS: Church Rooms, Old Bury Road, Stanton IP31 2BX. 1st & 3rd Tuesdays 7.00-9.00pm. Cost £2. sheet music & tea/coffee provided. Pip & Colin Bedford 01359 251013 mob 07795 412539 p1p@sky.com

SHOTTISHAM The Sorrel Horse: 2nd Mondays Folk nights with featured guests-spots available. 8.30pm. Chris Harvey 01394 411960 chris@jigdolls.co.uk www.thesorrelhorse-shottisham.co.uk

WAVENEY FOLK CLUB: Gunton Estate Community Hall, Hollingsworth Road, N.Lowestoft NR32 4DZ. Alternate Fridays. No Bar-BYO. Peter Hood peterhood@talktalk.net www.waveneyfolkclub.co.uk

WAVENEY VALLEY FOLK COLLECTIVE: 2nd Tuesdays 8.00-11-00pm Ralph 07725 194081 ralph.barnett@btinternet.com

WAVENEY ACOUSTIC SINGAROUND CLUB: Gunton Estate Community Hall, Hollingsworth Road, N.Lowestoft NR32 4DZ. Play, sing, recite or just listen in a friendly & supportive atmosphere. Alternate Fridays. No Bar-BYO Brian Carter 01502 537812 brian Carter47@yahoo.com



## Music & Song Sessions

### MONDAYS

- BLAXHALL The Ship Inn: Monday afternoons "The Company of The Blaxhall Ship" (The Blaxhall Boys) Good old singsong-All welcome 2.30pm 01728 688316
- BURY FOLK COLLECTIVE: Oakes Barn, St Andrew's St South, Bury St Edmunds IP33 3PH. Traditional unaccompanied folk singers. 1st Mondays 8.00pm.
- BURY ST EDMUNDS The Dove, Hospital Road: 3rd Mondays. Traditional sing & play around the room. Dave Ward 01359 241554
- BURY ST EDMUNDS Old Farmhouse, Horsecroft: Easy Peasy Music Group. Tune session for beginners. Alternate Mondays 7.30-9.30pm. John Phillips horsecroft@hotmail.com
- THORNHAM MAGNA Four Horseshoes: 1st Mondays. Traditional tunes and songs. 01379 678777

### TUESDAYS

- GREAT GLEMHAM The Crown: Traditional English Song and Tune session 1st tuesdays from 8.15pm Richard Cove 01394 411345
- IPSWICH Lattice Barns, Woodbridge Road: Acoustic Music afternoon 1st & 3rd Tuesdays 2-5.00pm If you like to play guitar to harp & sing. All welcome. John Howard 01473 623386
- LAXFIELD, The Royal Oak: Alternate Tuesday afternoons from March 7th anytime after 1.30pm Barrie Haywood barrie.haywood@gmail.com
- MOATS TYE, COMBS, STOWMARKET The Gardeners Arms: Round the Room acoustic busking session. 1st Tuesdays 8pm. Barrie Pearce 01449 673963 Bring own drinks as Pub not trading, glasses available.
- RISBY Crown and Castle, South St: 1st Tuesdays 8.30pm. Sing, Say & Play Dave Cooper 01328 838271
- STOWMARKET Winchester's Wine Bar-Bistro, 7 Old Fox Yard: Busking Night. 3rd Tuesdays from 7.30pm. All welcome. Wendy & Allan Winchester 01449 770023 or wendywinch@googlemail.com
- TATTINGSTONE White Horse: Bluegrass session on last Tuesdays 8pm. All welcome. Chris 07889 607612

### WEDNESDAYS

- BOXFORD The Fleece: 2nd Wednesdays. 'Traditional' session. 01787 211183
- BLAXHALL The Ship Inn: Shipshape & The Company of The Blaxhall Ship. 4th Wednesdays 8.30pm. All welcome to attend & join in. Music, singing, stepping, stories. 01728 688316
- BURY FOLK COLLECTIVE: Oakes Barn, St Andrew's St South, Bury St Edmunds IP33 3PH. Contemporary Folk 1st Wednesdays 8.00pm [www.buryfolkcollective.co.uk](http://www.buryfolkcollective.co.uk)
- BURY FOLK COLLECTIVE: Oakes Barn, St Andrew's St South, Bury St Edmunds IP33 3PH. Folk from the Tradition. 3rd Wednesdays 8.00pm. [www.buryfolkcollective.co.uk](http://www.buryfolkcollective.co.uk)
- CRATFIELD Poacher: 3rd Wednesdays. Acoustic 'jam' session'. Roger 01986 798206
- DEDHAM The Duchy Barn, rear of Royal Square, Brook Street, Dedham CO7 6AA: Music & Song alternate months . Dates for 2017: 15th Feb, 19th April, 21st June, 23rd Aug, 25th Oct, 20th Dec. Dick Spanner
- HUNDON Rose & Crown: Folk club/session on 3rd Wednesdays. Anne 01440 762772 [ags@mypostoffice.co.uk](mailto:ags@mypostoffice.co.uk)
- RISBY The Crown and Castle: Last Wednesdays 8.30pm
- RUMBURGH The Rumburgh Buck, Mill Road, Rumburgh, Halesworth: 1st Wednesdays 8.30pm. Keshar Whitelock 01986 782258
- SHOTTISHAM The Sorrell Horse: Wayward Sessions. Traditional tunes session Wednesdays 8.30pm July 12th, Aug 9th, Sept 6th, Oct 4th, Nov 1st, 29th see Wayward Sessions Facebook pages for changes. [happysam@reallyneat.co.uk](mailto:happysam@reallyneat.co.uk)
- WOOLPIT The Bull: 2nd Wednesdays in the back room. Traditional songs and tunes around the room. 01359 240393 or John 07784 260006

### THURSDAYS

BARDWELL The Dun Cow: 2nd Thursdays 8pm. Informal music & song. Allen Nurse 01359 250806

BURY FOLK COLLECTIVE: Hunter Club, St Andrew's St South, Bury St Edmunds IP33 3PH. Wired Folk last Thursdays [www.buryfolkcollective.co.uk](http://www.buryfolkcollective.co.uk)

BLAXHALL The Ship Inn: Blaxhall Busk hosted by Matt Bayfield. Get together for musicians & lovers of good music. Open Mike PA provided, bring own leads. Alternate Thursdays 8.30-10.30pm 01728 688316

EASTBRIDGE Eels Foot: Every Thursday 'Squit' Session. 01728 830154

IPSWICH The Lattice Barn, Woodbridge Road, Ipswich: Alternate Thursdays 8pm 01473 727447 / 274977

IPSWICH Steamboat Tavern, New Cut West: Last Thursdays. Music & song. 01473 601902

KELSALE Social Club Bar: Singaround on 2nd Thursdays from 8pm. All welcome to join in or just listen. Mike Garratt 01728 603995 [mikegarratt94@gmail.com](mailto:mikegarratt94@gmail.com)

MARKET WESTON Mill Inn : 1st Thursdays. Informal music & song. 01359 221018

SOUTHWOLD Harbour Inn: Traditional Song and Tune session with Derek Simpson 2nd thursdays from 8.15pm

### FRIDAYS

CRATFIELD Poacher: Last Friday 'Busker's evening'. PA available. Roger 01986 798206

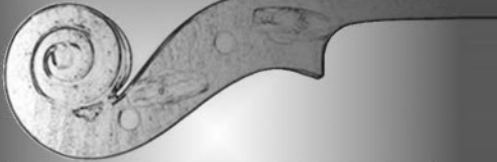
GLEMSFORD The Angel: Traditional music and a few songs. All welcome. Last Fridays 8.00pm Maggie Leopold 01787 281275

KETTLEBURGH Chequers: Traditional English Tune session with The Alde Buoys 3rd Fridays from 8.30pm

LONG MELFORD Cock & Bell, in the back room: 2nd Friday. Mostly song - formal performances on stage. 01787 379807

# JS Arts

JS Arts Traditional Music Courses since 1996



## Residential Music Workshops

**Expert Tuition in fiddle,  
melodeon, accordion and more**

**All accommodation en suite,  
all meals provided**

**Contact email  
[jsarts09@gmail.com](mailto:jsarts09@gmail.com)**

**Phone 07713 760266  
01476 567021**

**Web site: <http://jsarts.co.uk>**

## 2017 Workshops

Spaces still available on:

Sep 8-10 Fiddle Techniques

Oct 6-8 Mixed Instruments

All with tutor: Stewart Hardy

Please email  
[jsarts09@jsarts.com](mailto:jsarts09@jsarts.com) to be put  
on reserve list for other courses

Courses run from Friday  
1:00pm to Sunday evening  
and are aimed at all levels  
except absolute beginners.  
Format is 4 x 1½hr work-  
shops (2 on Friday) and infor-  
mal evening music sessions,  
sometimes with guests.

# Club and Session Guide

LOWESTOFT Gunton Estate Community Hall, Hollingsworth Road, N.Lowestoft NR32 4DZ:  
Waveney Acoustic Singaround Club. Play, sing, recite or just listen in a friendly &  
supportive atmosphere. Alternate Fridays. No Bar-BYO Brian Carter 01502 537812  
briancarter47@yahoo.com

SATURDAYS.

SUNDAYS

EASTBRIDGE. Eels Foot: Last Sundays Folk session. 01728 830154

IPSWICH The Mulberry Tree: Alternate sunday session 7.00pm. Traditional song and tunes.

IPSWICH The Spreadeagle: 3rd Sundays 2pm-5pm Music and Song.

lou@spreadeagleipswich.co.uk mim@trianglemusic.info

OFFTON Limeburners: Every Sunday. Song & Music session. 01473 658318

PETTISTREE Greyhound: Acoustic singaround on 2nd Sundays from 7.30pm. 01728 74645

SOUTHWOLD Harbour Inn: 1st and 3rd Sunday 'Shindig' sessions. 01502 722381

TATTINGSTONE White Horse: 1st and 3rd Sundays. Busking sessions 01473 328060

SUDBURY Bar of The Quay Theatre, Quay Lane: Acoustic music. Open music nights. Mostly  
last Sundays 7.30pm. All welcome. See website or 01787 374745 for details.

## Storytelling

IPSWICH Margaret Catchpole Pub: The Gippeswyk Storytelling Circle. 1st Mondays 8pm.

Storytellers & listeners welcome. Robin Herne robinherne@hotmail.com

## NORFOLK CLUBS

Norfolk Folk Association: David Radnedge 01603 615524. Pete Rushmer 01263 577885

peterrushmer@hotmail.com

See also [www.norfolkfolk.co.uk](http://www.norfolkfolk.co.uk)

## Social Dance

BRANCASTER STAITHE FOLK DANCE GROUP. Approx Monthly on Mondays, Village  
Hall. 7.30 English/Scottish. Janet Bowles 01485 210587

BRISLEY FOLK DANCE GROUP. Village Hall Mon 7.30pm. Molly 01362 687210 or Steve  
07850 343697 stevemfaas@yahoo.co.uk

CROMER FOLK DANCE CLUB. Tue 7.30pm, (not August) W.I. Hall, Garden Street. John  
Twell - 01263 578224.

JELENKA BALKAN FOLK DANCE GROUP. Hempton Memorial Hall, nr Fakenham NR21  
7LG. Monthly Saturdays 2pm. Dawn Wakefield 01328 856582  
dawnwakefield@btinternet.com

NORFOLK CEILIDHS. John Innes Recreation Centre Club, Norwich Research Park, NR4 7UH.  
Fridays 8-10.30pm see [www.norfolk-ceilidh.org.uk](http://www.norfolk-ceilidh.org.uk) for dates. John 01603 812472  
info@norfolk-ceilidh.org.uk

NORWICH HISTORICAL DANCE. Norwich High School Thursdays 7.30pm during term  
time. Harriet Cox. 01603 458447.

NORWICH REEL SOCIETY (Scottish Country Dancing) Alternate Weds. United Reformed  
Church Hall, Unthank Rd. Contact Janice McKellar 01603 717898

NORWICH FRIDAY FOLK DANCE CLUB. (Country/Playford). 7.30pm Fridays term time,  
Cringeford Pavilion, Oakfields Road, NR4 6XF Val Grogutt 01379 608313.

NORWICH PIED À TERRE. European Music & Dance 1st Wednesdays. 7.30pm Keir Hardie  
Hall, St Gregory's Alley. Sarah Bates 01603 768463 [www.piedaterre.me.com](http://www.piedaterre.me.com)

SHERINGHAM FOLK DANCE CLUB. Mondays 7.30pm (not Aug). St Andrews Methodist  
Church Hall, Cromer Road. Margaret Farley 01263 820050

STIBBARD FOLK DANCE GROUP. Alternate Fridays 7.45pm, Stibbard Village Hall, near  
Fakenham. (Not July & Aug) Mary Dugdale 01328 829215

THETFORD FOLK DANCE CLUB. Mondays 8pm, Methodist Church Hall, Tanner Street,  
Margaret Ince 01842 763183

TROWSE IRISH SET DANCING: Manor Rooms, Trowse nr Norwich.. 4th Mondays 8.00-10pm  
£2.00 incl tea & biscuits. Peter Jackson 01986 897082

[www.irishsocietyofeastanglia.co.uk/dancers](http://www.irishsocietyofeastanglia.co.uk/dancers)

WROXHAM FOLK DANCE CLUB. Church Hall, Norwich Road. Most Fridays 7.30pm. Mick Wade 01692 404447

YARESIDERS FOLK DANCE CLUB. Thursdays 7.30pm, Unitarian Hall, Yarmouth Way, Great Yarmouth. Mrs Gillian Johnstone - 01493 843099

## **Music & Song Clubs**

NORWICH FOLK CLUB: Christ Church Centre, Magdalen Road, New Catton NR3 4LA: Fridays 8.00-11.00pm. Guests monthly, song sessions other Fridays. Bridget Lely. 01603 425546 [www.norwichfolkclub.net](http://www.norwichfolkclub.net)

NORWICH PHAB CLUB: Vauxhall Centre, Vauxhall Street, Chapelfield Road, Norwich NR2 2SA. Tuesdays 7pm. Martin Fuller 01603 404558 [www.norwich.phab.org.uk](http://www.norwich.phab.org.uk)

FOLKSPOT RADIO: internet radio at [www.westnorfolkradio.co.uk](http://www.westnorfolkradio.co.uk): Sunday night folk and live music. 7pm-10pm broadcasting from Great Massingham Social Club

SHERINGHAM FOLK CLUB: The Tyneside Club, Sheringham. 2nd Wednesdays. 8pm. Eddie Bailey 01263 821129

UNCLE WALTER'S MUSIC NIGHT: Orchard Gardens, North Walsham. 4th Tuesdays 8pm Folk & Traditional Music Club

WAVENEY VALLEY FOLK COLLECTIVE: Crossways Inn, Scole IP21 4DP. Showcase events & local artists nights. Bryan Pearson 07958 758602 [bernardbaines@gmail.com](mailto:bernardbaines@gmail.com)

WEYBOURNE FOLK CLUB: Maltings Hotel: 3rd Sundays 3pm-6pm. Singers, musicians & audience all welcome. Tony Baylis 01263 588781. [tonyandcarmen@btinternet.com](mailto:tonyandcarmen@btinternet.com)

## **Music & Song Sessions**

### *MONDAYS*

NORWICH The Rose Tavern, Trinity Street, Norwich NR2 2AT: Every Monday Music & Song Open friendly session 9-11pm 01603 612110

SHERINGHAM Tyneside Club Station Road: 1st Mondays. Singaround. Pete Sampher 01263 826911 Call first.

### *TUESDAYS*

GORLESTON ON SEA Shrublands Community Centre: Tuesdays. Music & Song from 8.30pm 01493 603780

HARLESTON The Swan: Every Tuesday 2pm-6pm. Acoustic songs and tunes. All welcome. Come and join this easy going happy crowd. Elaine 01379 740238

HEMPTON Bell Folk Music Sessions. The Bell, Nr Fakenham. 2nd Tuesdays. Dawn Wakefield 01328 856582

NORWICH The Duke of Wellington, Waterloo Road: Von Krapp Family evening for listening only (not a joining in session) 9pm. Dougie 01603 441182

RINGSTEAD, The Gin Trap Inn, 6 High Street PE36 5JU: Acoustic session, friendly atmosphere. Songs, tunes, all instruments. Last Tuesdays 7.45-10.30pm. Adrian Tebbutt 01553 631697 or Steve Knowles 01485 525264 [www.gintrapinn.co.uk](http://www.gintrapinn.co.uk)

### *WEDNESDAYS*

NORWICH The Gatehouse, Dereham Road: Irish session. 01603 620340

SHERINGHAM The Tyneside Club: 2nd Wednesdays 8pm. Eddie Bailey 01263 821129 (not Nov, Dec or Feb)

### *THURSDAYS*

EAST HARLING Swan: 5th Thursdays. Informal music & song. Julian Flood 01359 221540

NORTH LOPHAM King's Head: 3rd Thursdays. Music and song. George Estcourt 01379 688007

NORWICH Gatehouse Dereham Road: 9.00-11.30pm. 01603 620340

REDGRAVE Cross Keys: 4th Thursdays. Informal music & song. Julian Flood 01359 221540

WOLFERTON Social Club: The Wolf Folk Club Sing-arounds on alternate Thursdays. [www.norfolkfolk.co.uk](http://www.norfolkfolk.co.uk) Roger Young 01485 600948

### *FRIDAYS*

HINDOLVESTON Village Hall Bar: Last Fridays. Rig-a-Jig-Jig band & friends. Local traditional music, song & step dancing. Chris 01263 861694 [christopherholderness@gmail.com](mailto:christopherholderness@gmail.com) Call first.

# Club and Session Guide

## SATURDAYS

FLYING FOLK CLUB. Various venues around Norwich. Saturdays approx monthly. Call Geoff Roberts 01603 429897

RAVENINGHAM Ravenous Cafe, Raveningham Centre, Beccles Road NR14 6NU: 2nd Saturdays 7.30 -10.30pm. Singers, Musicians & listeners all welcome. 01508 548406 mal@norfolkkrugs.co.uk www.mdcannellantiques.com

## SUNDAYS

GAYTON Crown: 1st Sundays. Songs & Tunes. 01553 636252

NORWICH Gatehouse, Dereham Road: 2nd Sundays 2pm. Celtic. John Gates 01603 620340

WYMONDHAM The Feathers: Meet in the Hedge session. Last Sundays 01953 605675

## ESSEX CLUBS

Essex Folk Association: Janet Barclay 01621 828576 janet@lbarclay.demon.co.uk

Essex Folk News Celia Kemp cakemp@hotmail.com www.essexfolk.org.uk

## Social Dance

BULMER FOLK DANCE CLUB. Bulmer Village Hall: 2nd Mondays 8.00pm (Not Aug) Wendy Rowe - 01787 375935.

CLACTON & DISTRICT CALEDONIAN SOCIETY. Conservative Club, Old Road. Mondays 7.45pm. Sue Curd 01255 436954

COLCHESTER FOLK DANCE CLUB St. John's Green School.: Fortnightly, Wednesdays in school terms. 8pm. Tom Grady 01206 549176 tomjgrady@gmail.com

MARKS TEY FOLK DANCE CLUB St Andrews Church Hall: 1st, 3rd and 5th Tuesdays 7.30-9.30pm. Sylvia Gaspar 01206 240591

PRET A DANSER The Piatto Cafe, 17-19 Priory Walk, Colchester CO1 1LG: French & Breton music & dance. 7pm music workshop, 8-10pm dance. lindalicejones@hotmail.com keytothecellar@gmail.com

TOUCHSTONE FOLK DANCE CLUB Wivenhoe Congregational Church Hall: Thursdays (not summer holidays & Christmas). 8pm. Elaine Wood. 01206 822877.

TRIANGLE FOLK DANCE CLUB Frinton Community Assn, Soken House, The Triangle, Frinton: 1st, 3rd & 4th Mondays 7.30pm. Liz Bruce 01255 676960.

## Music & Song Clubs

COLCHESTER FOLK CLUB: Arts Centre, St Mary-at-the-Walls, Church Street. Mondays 8pm. Elaine Barker 01206 735606. colchester.folk.club@gmail.com Arts Centre 01206 500900 www.colchesterartscentre.com

COLCHESTER FOLK & ROOTS CLUB: Three Wise Monkeys, 60 High St, Colchester CO1 1DN. Scott Simmons flaxbowmusic@yahoo.co.uk 07758073401

COLCHESTER WAITS: St Andrews Church Hall, Marks Tey. 1st Fridays-Renaissance & Medieval music on period instruments. 3rd Fridays-any instrument. Lizzie Gutteridge 01206 212466 lizzie@elizabethgutteridge.co.uk

COLCHESTER SLACKFOLK: Piatto Cafe 17-19 Priory Walk CO1 1LG 2nd Saturdays 2-4.30. www.facebook.com/SlackFolk. 078507732910

GREAT BARDFIELD FOLK CLUB 1 Vine st, Great Bardfield CM7 4SR: 2nd Thursdays 7.30pm Ray & Anna

HAVERFOLK (Havering Folk Club): Stables Function Suite, White Horse, 118 High Road, Chadwell Heath, Romford, Essex RM6 6NU. Wednesdays 8pm. Open session Jam session for instrumentalists until 8.30pm followed by floor spots. www.haverfolk.com, haverfolk@gmail.com

HOY AT ANCHOR FOLK CLUB: The Royal British Legion, 7-9 Northview Drive, Westcliff on Sea. SSO 9NG. Every Tuesday 8pm. Tony Prior 01702 715111

ROMFORD FOLK CLUB: The Sun, 47 London Road, Romford RM7 7AQ. Every Tuesday 8pm STORTFOLK; Royal British Legion 28 Windhill Bishop's Stortford CM23 2NG. Thursdays 8.30pm. Jon McNamara.01279 656664 J.f.mcnamara@talk21.com

WIVENHOE FOLK CLUB The Flag Inn, Colchester Road: 1st Thursdays. doors open 7.30pm music starts at 8pm. Denise Bidewell 01206 827759 a.v.l@online.net.



## Music & Song Sessions

### MONDAYS

LITTLE GREEN Compasses: 3rd Mondays. Myles Barrett 07831815134  
myles.barrett@btinternet.com.

### TUESDAYS

COLCHESTER Ale House, 82 Butt Road, Colchester, CO3 3DA: 4th Tuesdays 8pm-11pm Song & Tune session run by Cathy & Kieran Fitzgerald 01206 548571 kieransgm@gmail.com  
LITTLE BENTLEY Bricklayers: 3rd Tuesdays Bluegrass. 8pm. 01206 250405  
TATTINGSTONE Wheatsheaf: 2nd Tuesdays Bluegrass.  
TATTINGSTONE White Horse: Last Tuesdays Bluegrass Chris & Jill.  
CHELMSFORD United Brethren, New Writtle St: Every Tuesday Main session in bar 9pm.  
Reduced tempo beginners session in back room 7-8.30pm every tuesday except 1st tuesdays. Fred Field 01621 862608

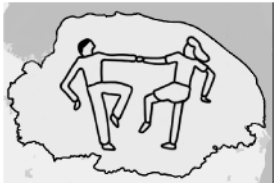
### WEDNESDAYS

FRATING The Kings Arms: On the A133, Clacton side of Colchester. 4th Wednesdays 8pm.  
Brenda Perry 01206 230537 07895196656 perrybr@btinternet.com.  
HEDINGHAM MUSICIANS NIGHT Snooker & Social Club, Station Rd, Sible Hedingham: 4th Weds. Acoustic open mic session & featured artist. Terry Crouch 01787 460264  
onebigidea@hotmail.co.uk.

### THURSDAYS

ALTHORNE The Huntsman and Hounds, Green Lane: 2nd Thursdays Meg Crawford 01621 783965  
MARGARETTING TYE White Hart: 2nd Thursdays. Informal song & music sessions in the bar. Paul McCann 01277 353388 pauldmccann@hotmail.com  
PLESHEY The Leather Bottle: 1st Thursdays 8.30pm. Fred Field 01621 862608

## Norfolk Ceilidhs



Oct 06 Skylarking  
Nov 10 The Valiant Dance Band  
Dec 08 The Marisca Trio

8 - 10:30pm  
John Innes Social Club,  
Norwich Research Park, NR4 7UH  
Tickets £6  
email [info@norfolk-ceilidh.org.uk](mailto:info@norfolk-ceilidh.org.uk)  
[www.norfolk-ceilidh.org.uk](http://www.norfolk-ceilidh.org.uk)



## STANTON MUSICIANS

Is a Suffolk Folk Session designed to encourage you to play traditional music mostly in the keys of G & D. Good tunes played both moderate pace and fast in friendly company and with mutual support. Sheet music supplied – no extra cost. We meet at The Church Rooms, Old Bury Road, Stanton IP31 2BX (next to the church!) from 7.00 to 9.00pm on the first and third Tuesdays of each month. It costs just £2.50 including a cuppa and a nibble. Enquiries to Pip or Colin Bedford 01359 251013 or [p1p@sky.com](mailto:p1p@sky.com)



# Club and Session Guide

PURLEIGH, The Bell, The Street CM3 6QJ: 3rd Thursdays Meg 01621 783965

SOUTHMINSTER Station Arms: 4th Thursdays. Meg Crawford 01621 783965

WITHAM Little Elms Pub, Dorothy Sayers Drive: Singaround Janet Gylford 01376 513238  
07941 354685

WOODHAM FERRERS The Bell, Main Street B1418: 1st Thursdays Meg Crawford 01621 783965

WRITTLE GREEN Rose and Crown (Ex Blackmore FC) 1st Thursdays, singaround. Dave  
Andrews 07871 628981 david@andrews714.freeseve.co.uk

## FRIDAYS

INGATESTONE Viper, Mill Green: 2nd Fridays 8.30pm. Fred Field 01621 862608

CHIGNALL ST JAMES Three Elms (near Chelmsford): 1st Fridays 8.30pm. Fred Field 01621  
862608

ROXWELL The Chequers (near Chelmsford): 3rd Fridays 8.30pm. Fred Field 01621 862608  
SATURDAYS

COLCHESTER Foresters Arms, 1-2 Castle Road, Colchester, Essex CO1 1UW: 2nd Saturdays,  
5pm onwards (following Slack Folk) song & tune session. tomashardy@gmail.com

## SUNDAYS

BRAINTREE King William 4th, London Road, Black Notley: 3rd Sundays 8.30pm. Fred Field  
01621 862608

BRAINTREE The Angel, Bradford Street: 4th Sundays. Fred Field 01621 862608

CHELMESFORD The Woolpack, Mildmay Road:

COLCHESTER The Forester's Arms: 2nd Sundays 8.00pm until closing time Tom Hardy  
keytothecellar@gmail.com

HATFIELD BROAD OAK The Cock, 2nd Sundays 7.30-10.30pm. Mixed music & song, all  
genres. Chris Brimley 01245 360082 freemusicsession@btinternet.com.

LITTLE HORKESLEY Beehive: 1st Sunday lunchtime. Carolyn Last 01206 511925

MALDON The Blue Boar Hotel, Silver Street 1st Sundays Edric Field 07968314069

## CAMBRIDGESHIRE CLUBS

See also [www.cambridgefolk.org.uk](http://www.cambridgefolk.org.uk) and [www.peterboroughfolkdiary.org.uk](http://www.peterboroughfolkdiary.org.uk)

## Dance Clubs

CAMBRIDGE CONTRA DANCE CLUB: Alternate Fri 8pm.

[www.cambridgefolk.org.uk/contra/](http://www.cambridgefolk.org.uk/contra/) St Andrews Church Hall, St Andrews  
Road, Chesterton, CB4 1DH Hugh Stewart 01223 368641

CAMBRIDGE INTERNATIONAL CLUB: [www.cambridgeinternationalclub.co.uk](http://www.cambridgeinternationalclub.co.uk)

International folk dance. 2Nd & 4th Mon 8.00pm. Gibson Hall, St Columbas Downing  
Place 01480 468359

CAMBRIDGE SCOTTISH SOCIETY DANCE CIRCLE: [www.camscotsoc.org.uk](http://www.camscotsoc.org.uk) Thurs 8pm.  
Unitarian Hall, Victoria Street. Donald Wilson 01954 210683

CAMBRIDGE UNIVERSITY STRATHSPEY & REEL CLUB: [cusarc.soc.srcf.net](http://cusarc.soc.srcf.net) Mon ( social  
dance) Wed (joint with RSCDS) 8-10pm contact: [soc-cusrc-committee@lists.cam.ac.uk](mailto:soc-cusrc-committee@lists.cam.ac.uk)

THE ROUND (Cambridge University English Country Dance Club) [round.soc.srcf.net/](http://round.soc.srcf.net/):  
Thursdays in University term 8pm. Wesley Church Hall, King St. [soc-round-request@lists.cam.ac.uk](mailto:soc-round-request@lists.cam.ac.uk)

ROYAL SCOTTISH COUNTRY DANCE SOCIETY: Classes Tues & Wed eves. Ladies step  
dance monthly Sun afternoons. Highland monthly on Thur eves. Lindsey Ibbotson  
07977 905291

CAPRIOL SOCIETY FOR EARLY DANCE: Tues 7.45pm. St. Mark's Church Hall, Barton Road,  
Newnham. Angela Dyer 01799 521257 [ajdyer@hpcb.co.uk](mailto:ajdyer@hpcb.co.uk) [www.capriolsociety.org](http://www.capriolsociety.org)

HARSTON & HASLINGFIELD FOLK DANCE CLUB Village Halls on Tues (not July&Aug).  
Venue & info: email [info@circleleft.org.uk](mailto:info@circleleft.org.uk) [www.circleleft.org.uk](http://www.circleleft.org.uk) Clive Blower  
01223 870741

HEARTSEASE & ST NEOTS SWEEPS & MILKMAIDS: Thur 8.15pm not summer term.  
Eynesbury C of E Primary School, Montagu Street, Eynesbury, PE19 2TD. Patti Pitt  
01234 376278

HILTON REELS: Hilton Village Hall. First & Third Weds Oct to April 8pm. Torrie Smith 01223  
264054 / 07711 147277

PETERBOROUGH FOLK DANCE CLUB: Weds 7.30-9.30pm. Marholm Village Hall. PE6 7JA.  
Pat on 01733 266 873 or pfdc0987@gmail.com Soke Folk Dance Workshop Sunday 14th  
May 2.30pm £2.50 email or 01733 269108

TRIPLE A SQUARE DANCE CLUB. Fri 7.45-10.15pm. The Village Hall, High St, Hemingford  
Abbots. Wendy Ward secretary@aaasquares.co.uk

## **Music & Song Clubs**

BLACK FEN FOLK CLUB: The Boathouse, Cambridge. Sundays 7.15pm. Singers Nights &  
Guest Nights Julie Watson jwlz101@yahoo.co.uk

CAMBRIDGE FOLK CLUB. Fridays 8pm. Golden Hind, 355 Milton Road. Marian Treby  
01638 603986 enquiries@cambridgefolkclub.org www.cambridgefolkclub.co.uk

ELY FOLK CLUB. Weds monthly (not Aug) The Old Dispensary, 13 St Mary's Street, Ely. CB7  
4ER No Bar BYO 01353 740999 / 01353 664706. Details on www.elyfolkclub.co.uk

MAYFLOWER FOLK MUSIC. The Portland Arms, 129 Chesterton Rd, Cambridge, CB4 3BA  
Occasional singers sessions & concerts Debbie Patterson-Jones 01954 205433

ST NEOTS FOLK CLUB: Last Tuesdays weekly (not Aug) 8.15pm. The Priory Centre, Priory  
Lane, St. Neots. PE19 2BH. Roger Pitt 01234 376278 www.stneotsfolkclub.co.uk

## **Music & Song Sessions**

### *SUNDAYS*

FULBOURN Sports & Social Club (previously at Arrington): 1-4 pm alternate Sundays Nigel  
Pennick. keepinguptheday@gmail.com

LITTLEPORT Swan on the River 7pm music session. Mark Lemon greatouse@outlook.com  
07981 017771

### *MONDAYS*

CHATTERIS The Honest John: Third Mondays 9pm. Keith Cheale 01354 652868

HOLYWELL Old Ferry Boat Inn, PE27 4TG Nr St Ives. 3rd Mondays Round the Room acoustic  
music. Come & play, sing or listen 7.30pm. Clive Quick 01480 468177  
c.j.q@btinternet.com

MELBOURNE The Black Horse Orchard Road. Alternate Mons 8pm. Greenshoots Slow  
Session Starting from the dots. Paul Hardy 01223 263232  
www.greenshootsmusic.org.uk

### *TUESDAYS*

ELY TOWN FOLK The Town House, Market St, Ely: 2nd & last Tuesdays 7.30-11.00pm  
Singerounds Liam Browne 01353 659614 mob.0768240798 debzunliam@outlook.com

GREAT WILBRAHAM Meml Hall Social Club, Angle End: Second Tuesdays. Mainly English  
tunes. David Dolby 01440 783280

HISTON The King William IV, Church Street, Histon, Cambridgeshire CB24 9EP: First  
Tuesdays 8.30pm. Crofters Folk session. Contact: Dick Brading 01223 232 770

### *WEDNESDAYS*

RAMSEY Railway Inn, 132 Great Whyte: 2nd & 4th Wednesdays. Backroom Acoustic Music  
Club. Jools 07771 748247 Nigel 07756 468910 backroomacoustic@hotmail.co.uk  
www.thevac.co.uk

### *THURSDAYS*

BURWELL FOLK CLUB: Ex Service and Social Club 8.30-11. Michael Freaney, tel.  
01638 610458, 3rd Thursdays 8pm See Burwell Folk on Facebook.

## July 2017

|     |    |                                 |                              |  |
|-----|----|---------------------------------|------------------------------|--|
| Fri | 21 | Milkmaid Folk Club              | Martin Kaszak                |  |
| Sat | 22 | Mid Suffolk Folk Dance Club:    | Stowupland Village Hall      | Summer Dance<br>(dancing to recorded music caller tbc) |
| Tue | 25 | St Neots Folk Club              | Round the Room               |  |
|     |    | Hoy at Anchor Folk Club         | Emerald Hill                 |  |
| Thu | 27 | Cherry Hinton Hall              | Cambridge Folk Festival 2017 |  |
| Fri | 28 | The Apex, Bury St Edmunds       | The Bob Dylan Story          |  |
|     |    | Cherry Hinton Hall              | Cambridge Folk Festival 2017 |  |
| Sat | 29 | Cherry Hinton Hall              | Cambridge Folk Festival 2017 |  |
| Sun | 30 | Cherry Hinton Hall              | Cambridge Folk Festival 2017 |  |
|     |    | Folk at the Froize, Chillesford | Stables                      |  |
|     |    | Cherry Hinton Hall              | Cambridge Folk Festival      |  |

## August

|     |    |                                       |  |  |
|-----|----|---------------------------------------|--|--|
| Tue | 1  | Hoy at Anchor Folk Club               | Georgia Shackleton Trio  |  |
|     |    | Romford Folk Club                     | Open Night   |  |
| Tue | 8  | Hoy at Anchor Folk Club               | Phil Beer  |  |
|     |    | Romford Folk Club                     | Open Night   |  |
| Thu | 10 | Great Bardfield Folk Club             | Local Artist Night   |  |
| Fri | 11 | Waveney Folk Club                     | Summer Sing-a-Round Evening  |  |
| Tue | 15 | Hoy at Anchor Folk Club               | Open Night   |  |
|     |    | Romford Folk Club                     | Open Night   |  |
| Fri | 18 | Glemham Hall, Suffolk                 | FolkEast 2017  |  |
|     |    | Weybourne Folk Weekend (Village Hall) | Singaround + Two Coats Colder  |  |
| Sat | 19 | Glemham Hall, Suffolk                 | FolkEast 2017  |  |
|     |    | Weybourne Folk Weekend (Village Hall) | Singaround + Guests + Ceilidh with<br>Blancoes Yard (see Ad for details) |  |
| Sun | 20 | Glemham Hall, Suffolk                 | FolkEast 2017  |  |
|     |    | Weybourne Folk Weekend (Village Hall) | Singaround + Guests (see Ad for<br>details)                              |  |
| Tue | 22 | Hoy at Anchor Folk Club               | Snufkin  |  |
|     |    | Romford Folk Club                     | Open Night   |  |
| Fri | 25 | Waveney Folk Club                     | Summer Sing-a-Round Evening  |  |
| Sun | 27 | Folk at the Froize, Chillesford       | Tannara  |  |
| Tue | 29 | Hoy at Anchor Folk Club               | Stick in the Wheel   |  |
|     |    | Romford Folk Club                     | Open Night   |  |

## September

|     |   |                                       |   |  |
|-----|---|---------------------------------------|---|--|
| Fri | 1 | Hadleigh Folk & Acoustic Music Nights | Terence Blacker with The Columbines             |  |
|     |   | Milkmaid Folk Club                    | Other Roads + Reset Prose                       |  |
| Sat | 2 | East Anglian Traditional Music Trust  | Traditional Music Day (see ad p.33 for details) |  |

|     |    |  |   |   |
|-----|----|--|---|---|
| Tue | 5  | St Neots Folk Club                                     | Pilgrim's Way   |   |
|     |    | Hoy at Anchor Folk Club                                | Jeff Warner   |   |
|     |    | Mayflower Folk Club                                    | Steve Turner  |   |
|     |    | Romford Folk Club                                      | Guest Night with Stick in the Wheel                       |   |
| Fri | 8  | Waveney Folk Club                                      | Terence Blacker   |   |
| Sun | 10 | Hoy at Anchor Folk Club                                | @ Leigh Regatta   | Hoy Stage   |
| Mon | 11 | Colchester Folk Club                                   | Pons Aelius   |   |
|     |    | Sorrell Horse Folk Club, Shottisham                    |   | Harbour Lights  |
| Tue | 12 | St Neots Folk Club                                     | Eileen McGann   |   |
|     |    | Romford Folk Club                                      | Open Night  |   |
|     |    | Hoy at Anchor Folk Club                                | Jack Lawrence with Richard Plank & Alan Ward              |   |
| Wed | 13 | Ely Folk Club  | Gerry Colvin Band + Bernard Hoskin                        |   |
| Thu | 14 | Great Bardfield Folk Club                              | Oka Vanga   |   |
| Fri | 15 | Happy Sam Folk Events                                  | tba   |   |
|     |    | Milkmaid Folk Club                                     | Daniel Nestlerode + Stringbellows & Skip Finn             |   |
| Sat | 16 | Ceilidhs on the Move, Clopton Village Hall, IP13 6QN   |   |   |
|     |    |  | Syzewell Gap with Jon Hooton                              |   |
| Sun | 17 | Folk at the Froize, Chillesford                        | Greg Russell & Jack Rutter                                |   |
| Mon | 18 | Colchester Folk Club                                   | Greg Russell & Jack Rutter                                |   |
| Tue | 19 | St Neots Folk Club                                     | Fake Thackray   |   |
|     |    | Stapleford Granary, Bury Road, Stapleford, Cambridge   |   | Folk Ensemble with<br>Stu Hanna. Course starts today & continues thro' sept,<br>oct & nov |
|     |    | Romford Folk Club                                      | Open Night  |   |
|     |    | Hoy at Anchor Folk Club                                | Open Night  |   |
| Fri | 22 | Norwich Folk Club                                      | Flossie Malavialle  |   |
|     |    | Stapleford Granary, Bury Road, Stapleford, Cambridge   |   | Michael<br>McGoldrick, John McCusker & John Doyle   |
|     |    | Waveney Folk Club                                      | Sally Ironmonger and Brian Carter                         |   |
| Sat | 23 | Wingfield Barns  | Charlie Dore  |   |
| Mon | 25 | Colchester Folk Club                                   | Boo Hewardine & Brooks Williams                           |   |
| Tue | 26 | St Neots Folk Club                                     | Round the Room  |   |
|     |    | Romford Folk Club                                      | Members feature by Smolovik                               |   |
|     |    | Hoy at Anchor Folk Club                                | Daria Kulesh  |   |
| Wed | 27 | The Apex, Bury St Edmunds                              | Barbara Dickson Traditional Music + 20th<br>Century songs |   |
| Fri | 29 | Everyman Folk Club                                     | The Teacups   |   |
| Sat | 30 | Waveney Valley Folk Collective@ St Edmunds Hall, Hoxne |   | Hicks &<br>Goulbourne + support   |

## October

|     |   |                      |                               |
|-----|---|----------------------|-------------------------------|
| Mon | 2 | Colchester Folk Club | Alden, Patterson & Dashwood   |
| Tue | 3 | St Neots Folk Club   | Sophie Matthews & Chris Green |



# Events Diary

## What, where and when

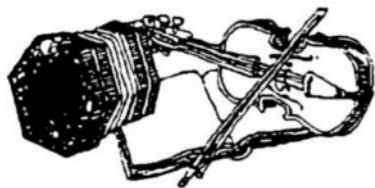
|        |   |  |
|--------|---|--|
|        | Romford Folk Club                                       | Open Night   |
|        | Hoy at Anchor Folk Club                                 | Saul Rose & James Delarre                          |
| Thu 5  | Colchester Arts Centre Folk Special                     | Sharon Shannon                                     |
| Fri 6  | Norfolk Ceilidhs, John Innes Recreation Centre, Norwich | Skylarking   |
|        | Hadleigh Folk & Acoustic Music Nights                   | Paul Scourfield with Phil Lyons                    |
|        | Milkmaid Folk Club                                      | John Richards + Kelly Pritchard & Kev Walford      |
|        | Waveney Folk Club                                       | Hannah Sanders and Ben Savage                      |
| Sat 7  | Fleece Folk @ The Boxford Fleece                        | Kelly Oliver                                       |
|        | Mid Suffolk Folk Dance Club: Stowupland Village Hall    |  |
|        |   | Autumn Dance Heather & Ilona + Caller Ron Coxall   |
|        | Henley Community Centre                                 | Big Music Night                                    |
| Mon 9  | Sorrell Horse Folk Club, Shottisham                     | Martin McNeil                                      |
| Tue 10 | St Neots Folk Club                                      | The Carravick Sisters                              |
|        | Milkmaid @The Apex, Bury St Edmunds                     | The Young 'Uns                                     |
|        | Romford Folk Club                                       | Members feature by Gemma Boyd                      |
|        | Hoy at Anchor Folk Club                                 | Open Night   |
| Thu 12 | Great Bardfield Folk Club                               | The Boxwood Chessman                               |
| Fri 13 | Norwich Folk Club                                       | The James Brothers                                 |
|        | Harwich   | Harwich International Sea Shanty Festival 2017     |
| Sat 14 | Harwich   | Harwich International Sea Shanty Festival 2017     |
|        | Bury St Edmunds   | Oxjam Folk Weekend                                 |
| Sun 15 | Harwich   | Harwich International Sea Shanty Festival 2017     |
|        | Bury St Edmunds   | Oxjam Folk Weekend                                 |
| Mon 16 | Colchester Folk Club                                    | Sam Kelly & Jamie Francis                          |
|        | The Apex, Bury St Edmunds                               | Electric Strawbs                                   |
| Tue 17 | St Neots Folk Club                                      | Open Stage   |
|        | Romford Folk Club                                       | Open Night   |
|        | Hoy at Anchor Folk Club                                 | Chris Sherburn & Denny Bartley with Emily Saunders |
| Wed 18 | Ely Folk Club   | Sam Kelly & Jamie Francis + support tbc            |
| Fri 20 | Happy Sam Folk Events                                   | Martyn Wyndham-Read                                |
|        | Milkmaid Folk Club                                      | Andrea King & Adrian Black                         |
|        | Waveney Folk Club                                       | Daniel Nestlerode                                  |
| Sat 21 | Great Bardfield Folk Club                               | Mike Silver  |
|        | Ceilidhs on the Move, Clopton Village Hall, IP13 6QN    |  |
|        |   | Harbour Lights Ceilidh Band with Mary Panton       |
| Mon 23 | Colchester Folk Club                                    | Martin Simpson                                     |
| Tue 24 | St Neots Folk Club                                      | Reg Meuross  |
|        | Romford Folk Club                                       | Guest Night with Dorten Yonder                     |
|        | Hoy at Anchor Folk Club                                 | Jim Bainbridge                                     |
| Thu 26 | Fleece Folk @ The Boxford Fleece                        | Heidi Talbot                                       |

|        |                                 |                            |
|--------|---------------------------------|----------------------------|
| Fri 27 | Everyman Folk Club              | Ken Wilson & Jim McFarland |
| Sun 29 | Folk at the Froize, Chillesford | Lucy Ward                  |
| Mon 30 | Colchester Folk Club            | 4 Square                   |
| Tue 31 | St Neots Folk Club              | The Hayes Sisters          |
|        | Hoy at Anchor Folk Club         | Pilgrim's Way              |

## November

|        |   |                                       |
|--------|---|---------------------------------------|
| Fri 3  | Hadleigh Folk & Acoustic Music Nights                   | Two Coats Colder with The O'Driscolls |
|        | Waveney Folk Club                                       | <i>tbc</i>                            |
|        | Milkmaid Folk Club                                      | Pennyless & Ralph Barnett             |
| Tue 7  | St Neots Folk Club                                      | Round the Room                        |
|        | Hoy at Anchor Folk Club                                 | Wildwood Jack                         |
| Wed 8  | The Apex, Bury St Edmunds                               | Mawkin                                |
| Thu 9  | Great Bardfield Folk Club                               | Jim McLean                            |
|        | The Apex, Bury St Edmunds                               | Levellers                             |
| Fri 10 | Norfolk Ceilidhs, John Innes Recreation Centre, Norwich | The Valiant Dance Band                |
|        | Norwich Folk Club                                       | Said the Maiden                       |
| Sat 11 | The Apex, Bury St Edmunds                               | Eddie Reader                          |
|        | Waveney Valley Folk Collective@ St Edmunds Hall, Hoxne  | Kirsty Merryn & Jack Harris           |

## St. Neots Folk Club



**The Priory Centre,  
St. Neots, PE19 2BH**  
Every Tuesday 8.00pm  
Email - [stneotsfolkclub@aol.com](mailto:stneotsfolkclub@aol.com)

Telephone - 01234 376278  
[www.stneotsfolkclub.co.uk](http://www.stneotsfolkclub.co.uk)



### August: Club Closed

|  |                               |
|--|-------------------------------|
| <b>Sept 5</b> Pilgrims' Way  | <b>Sept 12</b> Eileen McGann  |
| <b>Sept 19</b> Fake Thackray                                       | <b>Sept 26</b> Round the Room |
| <b>Oct 3</b> Sophie Matthews & Chris Green                         |                               |
| <b>Oct 10</b> Carravick Sisters                                    |                               |
| <b>Oct 17</b> Open Stage   |                               |
| <b>Oct 24</b> Reg Muross   |                               |
| <b>Oct 31</b> Hayes Sisters*                                       |                               |
| <b>Nov 7</b> Round the Room* <b>Nov 14</b> Dave Ellis & Boo Howard |                               |

**Venue and Contact Information**

|   |  |
|---|--|
| The Apex                                    | <a href="http://www.theapex.co.uk">www.theapex.co.uk</a> 01284 758000  |
| Arts North Norfolk The Atrium North Walsham | 01692 218060 <a href="http://www.artsnorthnorfolk.org">www.artsnorthnorfolk.org</a>  |
| Big Music Night                             | <a href="mailto:greens15@virginmedia.com">greens15@virginmedia.com</a> 01473 213740  |
| Bury Folk Collective                        | <a href="http://www.buryfolkcollective.co.uk">www.buryfolkcollective.co.uk</a> Brian Kew 01284 717199<br><a href="https://twitter.com/buryfolk">twitter.com/buryfolk</a>                                   |
| Black Fen Folk Club                         | <a href="mailto:jwlz101@yahoo.co.uk">jwlz101@yahoo.co.uk</a>   |
| Blaxhall Ship                               | <a href="http://www.blaxhallshipinn.co.uk">www.blaxhallshipinn.co.uk</a> 01728 688316  |
| Cambridge Corn Exchange                     | <a href="http://www.cornex.co.uk">www.cornex.co.uk</a> Box Office 01223 357851   |
| Cambridge Folk Club                         | <a href="http://www.cambridgefolkclub.co.uk">www.cambridgefolkclub.co.uk</a> Marion Treby 01638 603986   |
| Ceilidhs on the Move                        | <a href="http://cotm.suffolkfolk.co.uk">cotm.suffolkfolk.co.uk</a> Christine 01395 383329<br><a href="mailto:christine@sills12.fsnet.co.uk">christine@sills12.fsnet.co.uk</a>                              |
| Cambridge Junction                          | <a href="http://www.junction.co.uk">www.junction.co.uk</a> 01223 511511  |
| Colchester Folk Club                        | <a href="http://www.colchesterartscentre.com">www.colchesterartscentre.com</a> colchester-folk-club@ntlworld.com 01206 500 900   |
| Colchester Folk & Roots Club                | <a href="mailto:flaxbowmusic@yahoo.co.uk">flaxbowmusic@yahoo.co.uk</a>   |
| Diss Corn Hall                              | <a href="http://www.thecornhall.co.uk">www.thecornhall.co.uk</a> Box Office 01379 652241   |
| East Anglian Traditional Music Trust        | <a href="http://www.eatmt.org">www.eatmt.org</a>   |
| Electric Palace, Harwich                    | <a href="http://www.electricpalace.com/index.php?topic=folk">www.electricpalace.com/index.php?topic=folk</a> Box office 07870 620273, <a href="mailto:folk@electricpalace.com">folk@electricpalace.com</a> |
| Ely Folk Club                               | <a href="http://www.elyfolkclub.co.uk">www.elyfolkclub.co.uk</a> Ruth Bramley 01353 740999   |
| Everyman Folk Club                          | <a href="http://www.wheatstone.co.uk/everyman">www.wheatstone.co.uk/everyman</a> Steve/Mary 01449 615523   |
| FaB Club                                    | <a href="http://www.fabclubgrays.com">www.fabclubgrays.com</a> <a href="mailto:fabclubgrays@gmail.com">fabclubgrays@gmail.com</a>  |
| Folk at The Ark, Needham Market             | 01449 722615 or <a href="mailto:maggie@suffolkfolk.co.uk">maggie@suffolkfolk.co.uk</a><br><a href="http://www.suffolkfolk.co.uk">www.suffolkfolk.co.uk</a>   |
| Folk at the Froize, Chillesford             | David 01394 450282   |
| Great Bardfield Folk Club                   | <a href="mailto:greatbardfieldfolkclub@surfanytime.net">greatbardfieldfolkclub@surfanytime.net</a> 07881074412   |
| Hadleigh Folk and Acoustic Music Nights     | <a href="http://www.hadleighfolk.org.uk">www.hadleighfolk.org.uk</a> 07818 417780<br><a href="mailto:info@hadleighfolk.org.uk">info@hadleighfolk.org.uk</a>  |
| Halesworth Cut                              | <a href="http://newcut.org">newcut.org</a> Manager 01986 873285 , Box office 0845 673 2123   |
| Happy Sam Folk Events                       | <a href="http://happysam.co.uk">happysam.co.uk</a> <a href="mailto:happysam@reallyneat.co.uk">happysam@reallyneat.co.uk</a>  |
| Haverhill Arts Centre                       | <a href="http://www.haverhillartscentre.co.uk">www.haverhillartscentre.co.uk</a> 01440 714140 (box office)   |
| Hoy at Anchor Folk Club                     | <a href="http://www.ridgeweb.co.uk/hoy.htm">www.ridgeweb.co.uk/hoy.htm</a> Tony Prior 01702 715111   |
| John Peel Centre, Stowmarket                | <a href="http://www.johnpeelcentre.com">www.johnpeelcentre.com</a> Box Office 01449 774678   |
| Mayflower Folk Music                        | <a href="http://www.mayflowerfolkclub.org.uk">www.mayflowerfolkclub.org.uk</a> <a href="mailto:deb.patjones@gmail.com">deb.patjones@gmail.com</a>  |
| Mid Suffolk Folk Dance Club                 | 01473 742015 or 01449 258865   |
| Norfolk Ceilidhs                            | <a href="http://www.norfolk-ceilidh.org.uk">www.norfolk-ceilidh.org.uk</a> <a href="mailto:info@norfolk-ceilidh.org.uk">info@norfolk-ceilidh.org.uk</a><br>John 01603 812472                               |
| Milkmaid Folk Club                          | <a href="http://www.milkmaidmusic.co.uk">www.milkmaidmusic.co.uk</a> John Bosley<br><a href="mailto:milkmaidjohn@yahoo.co.uk">milkmaidjohn@yahoo.co.uk</a>   |

|                                |   |
|--------------------------------|---|
| Norwich Folk Club              | <a href="http://norwichfolkclub.net">norwichfolkclub.net</a> Bridget Lely 01603 425546<br><a href="mailto:bridget.lely@gmail.com">bridget.lely@gmail.com</a>                        |
| Norwich Friday Folk Dancers    | Val Grogutt 01379 608313  |
| Norwich Historical Dance Group | <a href="http://www.norwichhistoricaldance.org.uk">www.norwichhistoricaldance.org.uk</a>  |
| Norwich PHAB Club              | <a href="http://norwich.phab.org.uk">norwich.phab.org.uk</a> Martin Fuller 01603 404558   |
| St Neots Folk Club/Festival    | <a href="http://www.stneotsfolkclub.co.uk">www.stneotsfolkclub.co.uk</a> Roger/Patti Pitt 01234 376278  |
| Romford Folk Club              | <a href="http://www.romfolk.com">www.romfolk.com</a> <a href="mailto:romford.folkclub@btinternet.com">romford.folkclub@btinternet.com</a> Mick Brown 020 8592 2409 or 07757 497 584 |
| Sorrel Horse Music             | <a href="http://www.thesorrelhorse-shottisham.co.uk">www.thesorrelhorse-shottisham.co.uk</a><br><a href="mailto:chris.harvey8@btinternet.com">chris.harvey8@btinternet.com</a>      |
| Stapleford Granary             | <a href="http://www.staplefordgranary.org.uk">www.staplefordgranary.org.uk</a> <a href="mailto:ace@acefoundation.org.uk">ace@acefoundation.org.uk</a><br>01223 849004               |
| Waveney Folk Club              | <a href="http://www.waveneyfolkclub.co.uk">www.waveneyfolkclub.co.uk</a> Peter Hood<br><a href="mailto:peterhood@talktalk.net">peterhood@talktalk.net</a>                           |
| Waveney Valley Folk Collective | Bryan Pearson 07958 758602 <a href="mailto:bernardbaines@gmail.com">bernardbaines@gmail.com</a>   |
| Weybourne Folk Weekend         | <a href="http://www.WebbunFolkFest.com">www.WebbunFolkFest.com</a> Tony Baylis 01263 588781<br><a href="mailto:tonyandcarmen@btinternet.com">tonyandcarmen@btinternet.com</a>       |
| Wingfield Barns                | <a href="http://www.wingfieldbarns.com">www.wingfieldbarns.com</a>  |
| Wivenhoe Folk Club             | <a href="http://www.wivenhoe.gov.uk/Orgs/folkclub/">www.wivenhoe.gov.uk/Orgs/folkclub/</a> Brian 01206 823877 or<br>Denise 01206 827759   |

# *P J Music*



Wayside Cottage, Chapel lane, Botesdale, Diss, Norfolk, IP22 1DT

Music Books, Instruments and Accessories

for the

Traditional Musician and Dancer

01379 890088    07968 687011

Melodeon and Accordion repairs and tuning

[pjmusic@btinternet.com](mailto:pjmusic@btinternet.com)

[www.pjmusic.co.uk](http://www.pjmusic.co.uk)

**RADIO & Internet Radio**

BBC RADIO SUFFOLK. (103.9FM East, 104.6 FM West, 95.5 FM)

Stephen Foster hosts BBC Radio Suffolk's Drivetime show, which includes coverage of the folk music scene from 6-7pm Mon - Thursday

FOLKSPOT RADIO live music show broadcast every Sunday between 7 and 10 over the internet through <http://www.folkspot.co.uk/>

THANK GOODNESS IT'S FOLK 10:00-12:00 Friday morning folk show on Sheffield Live! [www.sheffieldlive.org](http://www.sheffieldlive.org) presented by Dave Eyre.

MIKE NORRIS'S CLASSIC FOLK programme broadcasts on 'The Wireless' ([www.thewirelessradio.com](http://www.thewirelessradio.com)) at 7pm-9pm Mondays and listen again on the EFDSS website at [www.efdss.org/listen](http://www.efdss.org/listen).

MIKE HARDING FOLK SHOW weekly podcast [www.mikehardingfolkshow.com](http://www.mikehardingfolkshow.com)

**PUBLICATIONS and WEB**

ENGLISH DANCE & SONG. Quarterly publication of EFDSS. 2 Regent's Park Road, London NW 7AY 0207 485 2206 [www.efdss.org](http://www.efdss.org)

EFN. (Essex Folk News). Quarterly. Editor/adverts/review: Editor Celia Kemp [editor@essexfolk.uk](mailto:editor@essexfolk.uk) [www.essexfolk.uk](http://www.essexfolk.uk)

FOLK LONDON. Bi-Monthly. Editors Peter Crabb-Wyke and Sue West phone 01494 791231 / 020 8509 0545 email [folklondon@hotmail.com](mailto:folklondon@hotmail.com) [www.folklondon.co.uk](http://www.folklondon.co.uk)

FOLK LEADS. Folk Songs & Customs. Sam Dodds & Ed Lawrence 01977 685122 (Leeds) [ed.sam.music@virgin.net](mailto:ed.sam.music@virgin.net) [www.grovefolkclub.org.uk](http://www.grovefolkclub.org.uk)

FOLK ORBIT. Clubs & Events in England & Wales. Colin Matthews 01244 313892 (Chester) [folkorbit@yahoo.co.uk](mailto:folkorbit@yahoo.co.uk) [www.folkorbit.co.uk](http://www.folkorbit.co.uk)

LITTLEBIRDTOLDME Norfolk and North Suffolk Folk diary, listings, venues. <http://littlebirdtoldme.info>

LIVING TRADITION. National coverage Magazine. Bi-monthly. PO Box 1026 Kilmarnock KA2 0LG 01563 571220 [www.folkmusic.net](http://www.folkmusic.net)

fROOTS. National monthly covering folk and world music available from newsagents [www.frootsmag.com](http://www.frootsmag.com)

NORFOLK FOLK LIST. Clubs & Sessions. 3 issues per year (November, March & July). David Radnedge, 20 Kenneth McKee Plain, Norwich 01603 61554

NORFOLK FOLK DIRECTORY. [www.norfolkfolk.co.uk](http://www.norfolkfolk.co.uk)

PETERBOROUGH FOLK DIARY. For Peterborough, North Cambridgeshire, South Lincolnshire, East Northamptonshire & West Norfolk. [www.peterboroughfolkdialry.org.uk](http://www.peterboroughfolkdialry.org.uk)

PUDDINGSTONE. Hertfordshire. 3 issues per year. Adrian Burrows, 1 Leyland Avenue, St Albans, AL1 2BD

SET & TURN SINGLE. Bi-monthly newsletter for folk dancers. Also a directory of Dance Clubs, Bands, Callers, & Dance Display Teams. Chris Turner, 0208 889 0634 [www.setandturnsingle.org.uk](http://www.setandturnsingle.org.uk) 9 Glendale Avenue, London N22 5HL

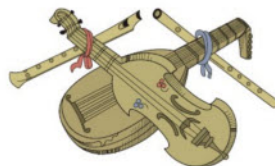
THE GRAPEVINE. Free monthly music 'What's On' in East Anglia available from music venues [www.grapevinelive.co.uk](http://www.grapevinelive.co.uk) 01473 400810

UNICORN. Beds/Bucks/Herts/Cambs and local folk. Simon Bailes, Clive Batkin and Mike Nacey 01767 310 424 10 Chapel Street, Dunton, Biggleswade, Bedfordshire, SG18 8RW [unicornmagazine@hotmail.co.uk](mailto:unicornmagazine@hotmail.co.uk) [www.unicornmagazine.org.uk/](http://www.unicornmagazine.org.uk/)



# Ceilidhs ON THE MOVE

[www.cotm.suffolkfolk.co.uk](http://www.cotm.suffolkfolk.co.uk)



English ceilidh and barn dances for all ages and abilities,  
With music from the best local and national bands.

Sep 16      Syzewell Gap      Clopton VH, IP13 6QN  
              with Jon Hooton

21 Oct      Harbour Lights      Clopton VH, IP13 6QN  
              with Mary Panton

Nov 18      Stumpy Oak      Clopton VH, IP13 6QN

## 2018

Feb 16      Banter      Clopton VH, IP13 6QN

Doors open at 7pm, dancing from 7.30 to 11.00pm

**\*\* BRING YOUR OWN DRINKS \*\***

### Tickets:

|                        |      |
|------------------------|------|
| Adults                 | £8   |
| Youth (10-16)          | £4   |
| Under 10               | Free |
| Family                 | £20  |
| (2 Adults, 3 children) |      |

Advance tickets available from

01394 383329 or email  
[christine@sills12.fsnet.co.uk](mailto:christine@sills12.fsnet.co.uk)

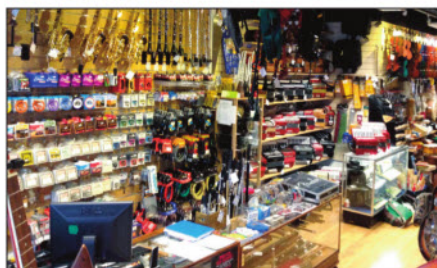
Members of **Suffolk Folk**  
receive a £1 discount





since 1976

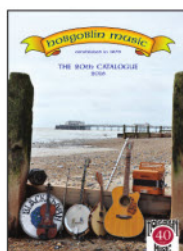
**BRITAIN'S FOLK & ACOUSTIC SPECIALISTS**



Our shops stock all kinds of acoustic & folkly musical instruments from Britain and around the world!

**Expert staff are always on hand to give you free, friendly advice.**

Try the instruments for yourself! Each shop has a huge and varied stock of new and secondhand instruments.

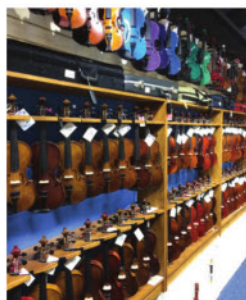


**2016 Catalogue  
Our Now!**

Pick up or request  
your free copy today.

## BIRMINGHAM VIOLIN SHOP LEEDS VIOLIN SHOP

Our branches in Birmingham and Leeds have specialist violin departments with repairers working on-site, a wide choice of new and old violins, violas and cellos, alongside accessories, spare parts and books.



**BIRMINGHAM | BRIGHTON | BRISTOL | CANTERBURY | LEEDS  
LONDON | MANCHESTER | SOUTHAMPTON | WADEBRIDGE**

Order online or call **0333 800 9500**

**[www.hobgoblin.com](http://www.hobgoblin.com)**

